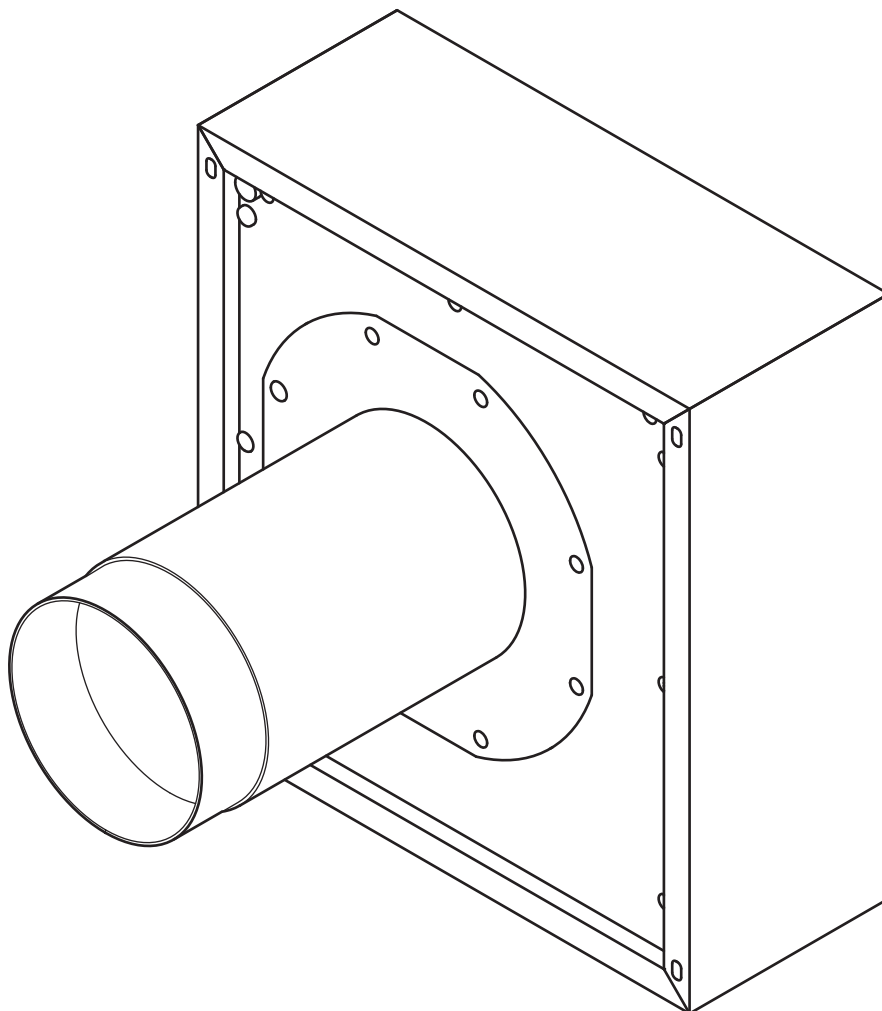


**EN Installation instructions – ULA**

BORA external wall fan – EC



**ULAUMEN-100**

# 1 General information, safety information

## 1.1 Other applicable documents

There are other documents that apply and must be observed along with these operating and installation instructions. Observe all the documents relating to the BORA cooktop extractor, which are a component of the particular scope of delivery.

### Directives

The device complies with the following EU directives:

2014/35/EU Low Voltage Directive  
 2014/30/EU EMC Directive  
 (EU) 640/2009 Electric Motors Ordinance  
 2011/65/EU RoHS Directive  
 2012/19/EU WEEE Directive

## 1.2 Use as intended

The device is intended for the removal of cooking vapours in combination with a BORA cooktop extractor in private households only. This device is not intended for:

- fitting in vehicles
- airing a room

BORA is not liable for damage caused by improper use or wrong operation.

**All misuse is prohibited!**

## 1.3 Safety instructions for installation and disassembly

Installation: the appliance may be installed and disassembled by qualified specialists only, who know and observe the customary regulations and additional regulations of the local utility company.

### ⚠ WARNING!

#### Danger of injury from a moving fan wheel!

If the fan wheel turns, there is risk of injury.

- ▶ Install the appliance in a tension-free condition exclusively.
- ▶ Before commissioning, connect the fan to the duct system.

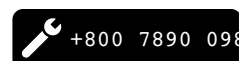
- ▶ Observe the maximum ambient temperature on the nameplate.

- i** For more detailed information on decommissioning, disassembly and disposal, please see the instructions provided with the cooktop extractor.

- i** BORA Holding GmbH, BORA Vertriebs GmbH & Co KG, BORA APAC Pty Ltd and BORA Lüftungstechnik GmbH are not liable for damage arising from non-compliance with the safety and warning information.

Installation instructions:     Original     Translation

The distribution and duplication of this document, as well as the use and disclosure of its contents are prohibited unless expressly authorised.



These operating and installation instructions have been drawn up with the greatest of care. But it cannot be ruled out that subsequent technical modifications have not yet been incorporated or the relevant content has not yet been adapted. Please accept our apologies in this eventuality. An updated version can be requested from the BORA Service Team. Subject to printing errors and mistakes.

© BORA Vertriebs GmbH & Co KG

All rights reserved.

**(D)**

**BORA Lüftungstechnik GmbH**  
 Rosenheimer Str. 33  
 83064 Raubling  
 Germany  
 T +49 (0) 8035 / 9840-0  
 F +49 (0) 8035 / 9840-300  
 info@bora.com  
 www.bora.com

**(A)**

**BORA Vertriebs GmbH & Co KG**  
 Innstraße 1  
 6342 Niederndorf  
 Austria  
 T +43 (0) 5373 / 62250-0  
 F +43 (0) 5373 / 62250-90  
 mail@bora.com  
 www.bora.com

**(INT)**

**BORA Holding GmbH**  
 Innstraße 1  
 6342 Niederndorf  
 Austria  
 T +43 (0) 5373 / 62250-0  
 F +43 (0) 5373 / 62250-90  
 mail@bora.com  
 www.bora.com

**(AU) (NZ)**

**BORA APAC Pty Ltd**  
 100 Victoria Road  
 Drummoyne NSW 2047  
 Australien  
 T +61 2 9719 2350  
 F +61 2 8076 3514  
 info@boraapac.com.au  
 www.bora-australia.com.au

## 5 Technical data / Device description

### 5.1 Technical data

Parameters	Value
Supply voltage	220 - 240 V
Frequency	50 Hz
Power consumption	149 W
Current consumption	1.26 A
Maximum ambient temperature	70°C
Maximum displacement volume	1080 m <sup>3</sup> /h
Maximum static pressure	530 Pa
Dimensions (WxDxH)	385 x 155 x 410 mm
Weight (incl. accessories/packaging)	16.5 kg
Housing material	Galvanised stainless steel / stainless steel
Duct connection size	Ø 150 mm
Power supply cable	10 m
Control line	10 m

Tab. 5.1 Technical data

#### Device size (mm)

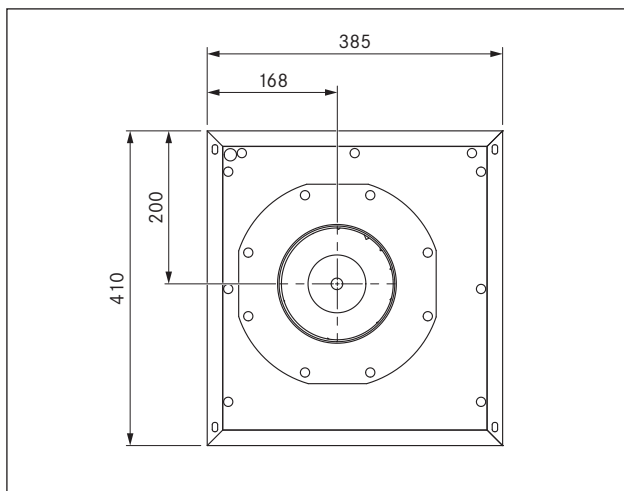


Fig. 5.1 Front view

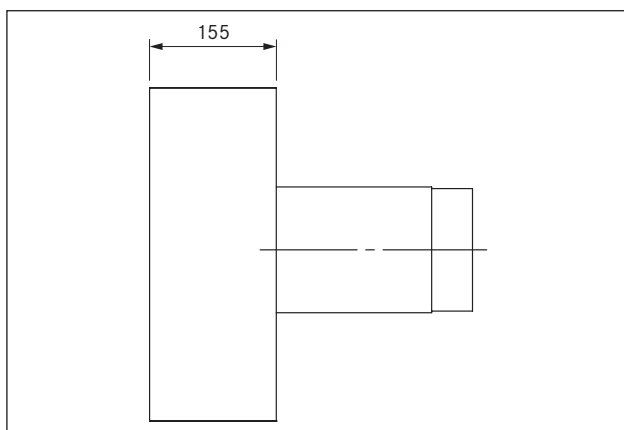


Fig. 5.2 Side view

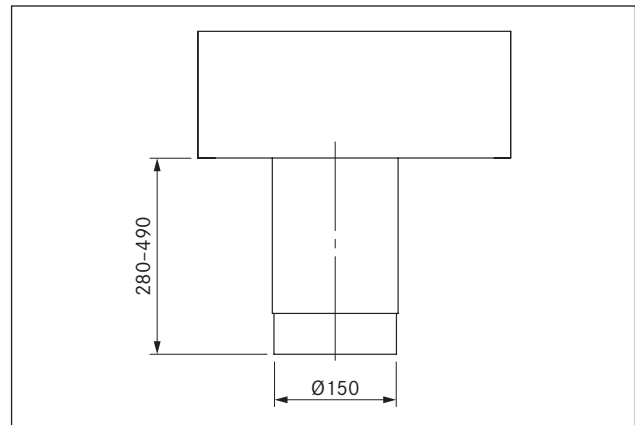


Fig. 5.3 Top view

### 5.2 Device description

- Installation on the outside of the building.
- Suitable for wall thicknesses of 280 mm to 490 mm.
- Downward air outlet.
- Fixing devices must be provided at the installation site.
- For an exhaust channel of more than 6 m in length or high pressure losses, the external wall fan must be supplemented by a universal fan module.
- If there are two fan modules in one exhaust air duct system, a minimum distance of 3 m must be observed between these two fans

#### Structure

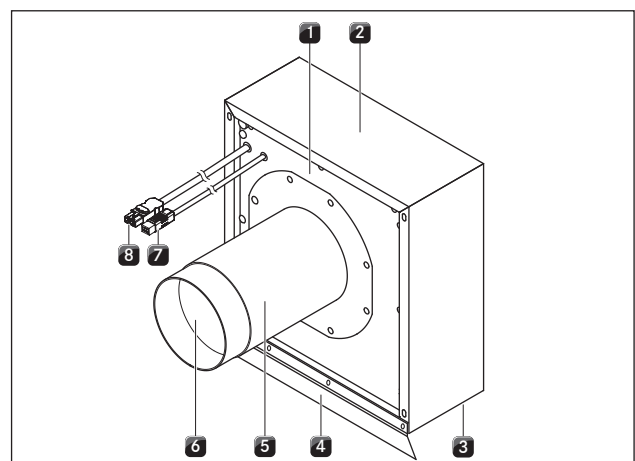


Fig. 5.1 Structure of external wall fan

- [1] External wall fan
- [2] Casing
- [3] Air outlet
- [4] Air repellent rail
- [5] Telescopic installation duct with integrated backflow trap
- [6] Air inlet
- [7] Control line with connection plug, 10 m
- [8] Mains cable with connection plug, 10 m

## 5 Installation

- ▶ Observe the safety and warning information in these operating and installation instructions, as well those of the BORA cooktop extractor (see section Safety).

### 5.1 Check scope of delivery

Name	Number
ULA external wall fan	1
Assembly information	1
Telescopic installation duct with integrated backflow trap	1
Air repellent rail	1
Empty duct Ø 40 mm x 400 mm for cable passage	1
EPDM sealing tape	1
Split ferrite sleeve	4

Tab. 1.1 Scope of delivery

- ▶ Check the scope of delivery for completeness and damage
- ▶ Notify BORA customer services if parts of the delivery are missing or damaged.
- ▶ Do not assemble damaged parts under any circumstances.
- ▶ Remove the transport packaging properly.

### 5.2 Installing the external wall fan

- i** The external wall fan is suitable for installation on the outside of the building with a wall thickness of 280 mm to 490 mm.
- i** The pre-installation of a KG duct Ø 200 mm (not contained in the scope of delivery) facilitates installation in the external wall.
- ▶ Observe all of the measures provided at the installation site to install the fan correctly and without any errors in consultation with all the trades concerned.
- ▶ Make sure that the wall is properly sealed.
- ▶ If necessary, install a steam trap (not contained in the scope of delivery).
- ▶ Clean the floor of heavy soiling.
- ▶ Lay the empty duct supplied in the masonry opening (in the pre-installed KG duct)
- ▶ Unscrew the casing [2].
- ▶ Install the air repellent rail [4] on the fan.
- ▶ Lay both connection cables [7], [8] through the empty duct.
- ▶ Put the telescopic installation duct [5] on the external wall fan [1].
- ▶ Mount the external wall fan [1] correctly on the external wall.
- The external wall fan [1] must be mounted according to the structure of the building.
- ▶ Screw on the casing [2].
- ▶ Connect the telescopic installation duct [5] to the duct system.
- ▶ Ensure the duct system is not taut.
- ▶ Lay both connection cables [7], [8].

#### 5.2.1 Connection to the BORA Ecotube duct system

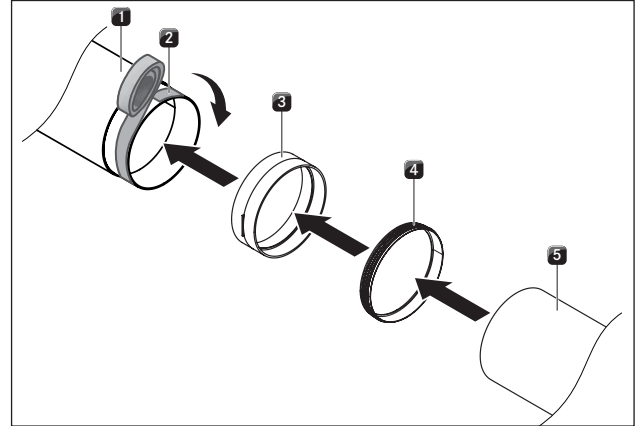


Fig. 1.1 Connection to BORA Ecotube duct system

- [1] Telescopic installation duct with integrated backflow trap
- [2] EPDM sealing tape
- [3] ERV duct connection (not contained in the scope of delivery)
- [4] ERD seal (not contained in the scope of delivery)
- [5] ER round duct (not contained in the scope of delivery)

- ▶ Join the fan to the Ecotube duct system as shown.

#### 5.2.2 Connection to the control unit

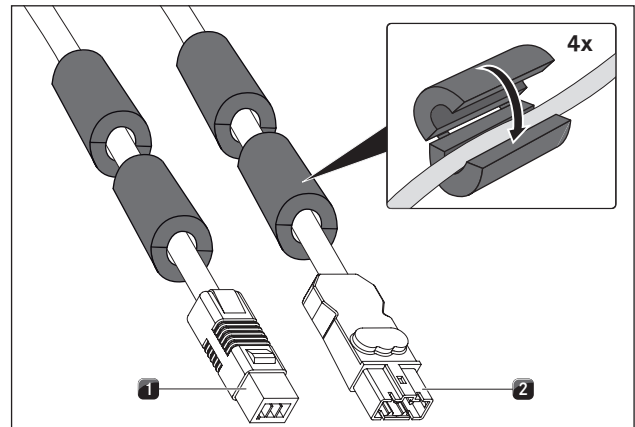


Fig. 1.2 Connection plug for the external wall fan

- [1] Connection plug for the control line
- [2] Connection plug for the power supply cable

- ▶ Attach the split ferrites provided with the product to the fan's connection cables (2 to each).
- ▶ Connect the control line [1] of the fan to the control unit of the cooktop extractor.
- ▶ Connect the power supply cable [2] of the fan to the control unit of the cooktop extractor.
- ▶ Check that the plugs and sockets fit snugly.
- ▶ Make sure the cable is not damaged.
- ▶ Check that the installation correct.