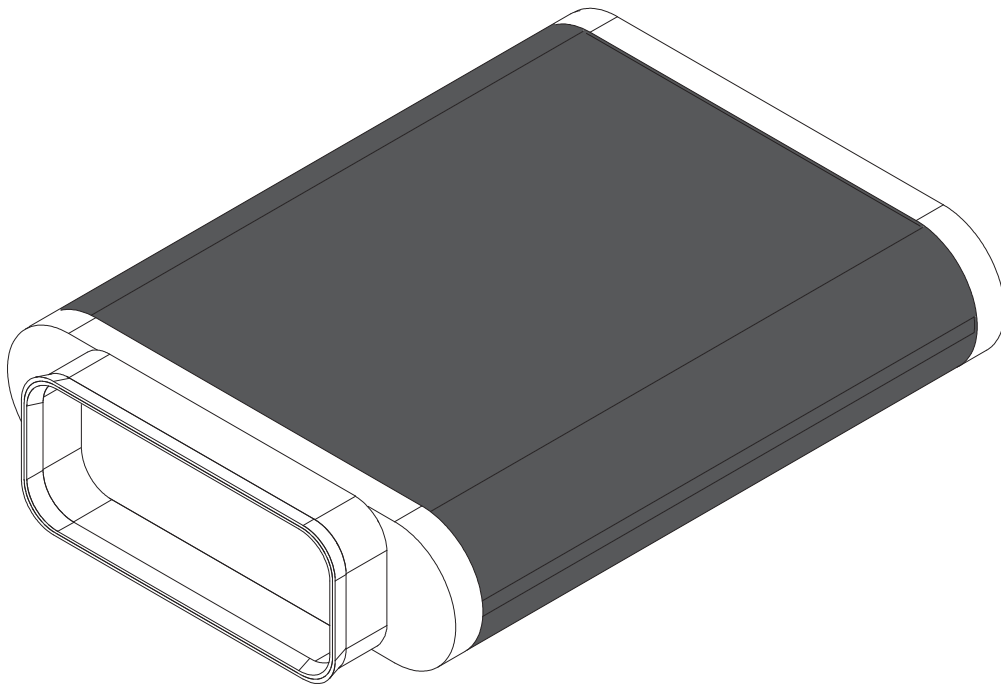


EN Operating and installation instructions UUE1

Universal recirculation unit 1



UUE1UMEN-000

Operating and installation instructions:

Original

Translation

Manufacturer

BORA Lüftungstechnik GmbH

Rosenheimer Str. 33
83064 Raubling
Germany

Contact

T +49 (0) 8035 / 907-240
F +49 (0) 8035 / 907-249
info@bora.com
www.bora.com

The distribution and duplication of this document, as well as the use and disclosure of its contents are prohibited unless expressly authorised.

© BORA Lüftungstechnik GmbH, 2016

All rights reserved.

Table of Contents

1	General	4
2	Safety	6
2.1	General safety instructions	6
2.2	Safety instructions – operation	6
2.3	Intended use	6
3	Device description	8
3.1	Technical data	8
3.2	Structure	8
3.3	Functional principle	8
4	Installation	9
4.1	Checking the scope of delivery	9
4.2	Assembly instructions	9
4.3	Installing the recirculation unit.....	9
4.3.1	Installing the recirculation unit.....	9
4.3.2	Replacing the Universal recirculation unit.....	9
4.4	Handover to user.....	9
5	Cleaning and maintenance	10
5.1	Cleaning agents.....	10
5.2	Cleaning	10
6	Troubleshooting	11
7	Warranty, service and spare parts	12
7.1	Warranty.....	12
7.2	Service	12
7.3	Spare parts.....	12
8	Decommissioning, disassembly and disposal	13
8.1	Decommissioning	13
8.2	Disassembly	13
8.3	Disposing of the product in an environmentally friendly way	13
9	Notes	14

1 General

Target group

These operating and assembly instructions are intended for the following target groups:

Target group	Requirements
Users	The Device may be used by children from the age of 8 as well as by people with limited physical, sensory or mental capabilities or a lack of experience and/or knowledge, provided they are supervised, have been instructed in the safe use of the device and have understood the dangers involved. Children must be supervised. All safety and warning information and handling instructions in the operating manual must be followed.
Ambitious DIYers	Ambitious DIYers may carry out all the necessary carpentry and assembly work themselves providing that they have the necessary skills and knowledge. They must not connect the current and gas themselves.
Assembly expert	The assembly expert must carry out all the necessary carpentry and assembly work taking existing regulations into account. The current and gas connections must be approved for the system in use by a certified electrician or gas engineer before use.
Electrical expert	The electrical connection must only be executed by a certified electrician. He/she also assumes responsibility for the proper electrical installation and commissioning.
Expert gas connection	The gas connection must only be implemented by a certified gas engineer. He/she also assumes responsibility for the proper gas installation and commissioning.

Tab. 1.1 Target groups

INFO	<p>BORA Holding GmbH, BORA Vertriebs GmbH & Co KG, BORA APAC Pty Ltd and BORA Lüftungstechnik GmbH - hereinafter referred to as BORA - shall not assume any liability for damage caused by non-compliance with these documents nor by improper assembly!</p> <p>The electricity and gas connections must be implemented by a certified engineer. Assembly must only take place in compliance with the applicable norms, regulations and laws. All safety and warning information and handling instructions in the operating and assembly instructions must be followed.</p>
-------------	---

Validity of the operating and assembly instructions

This manual is valid for several versions of the device. For this reason, it is possible that individual features are described in the manual that do not apply to your device.

Other applicable documents

Additional documents are valid as well as these operating and assembly instructions, and likewise need to be observed.

Please observe all documents included in the scope of delivery.

INFO	BORA cannot assume any liability for damage caused by non-compliance with these documents!
-------------	--

Guidelines

These devices meet the following EC guidelines:

- 2004/108/EC EMC Directive
- 2006/95/EC Low-Voltage Directive
- 2009/125/EC Ecological Design Directive
- 2010/30/EC Energy label Directive
- 2011/65/EC RoHS Directive

Depiction of information

We used standard formatting, numbering, symbols, safety instructions, terms and abbreviations so that you can work quickly and safely when using this manual.

Instructions are marked with an arrow.

► Always perform all instructions in the prescribed order.

Enumerations are indicated with a square bullet point at the start of the line.

- Enumeration 1
- Enumeration 2

INFO	Information notes point to special features that must be taken into account.
-------------	--

Safety and warning instructions

The safety and warning instructions in this manual are emphasised with symbols and signal words.




Safety and warning instructions are structured as follows:

WARNING SYMBOL AND SIGNAL WORD!
Type and source of the danger
 Results of non-compliance

► Measures to minimise risk

Please note:

- The warning symbol draws your attention to the risk.
- The signal word indicates the severity of that risk.

Warning symbol	Signal word	Risk
	Danger	Indicates an immediate, hazardous situation which causes death or serious injury if not respected.
	Warning	Indicates a potentially hazardous situation which can cause death or serious injury if not respected.
	Caution	Indicates a possible hazardous situation which can cause minor injury if not respected.
–	Caution	Indicates a situation which can cause minor injury if not respected.

Tab. 1.2 Meaning of the warning symbols and signal words

2 Safety

2.1 General safety instructions

INFO The appliance complies with the stipulated safety requirements. The user is responsible for appliance cleaning and maintenance as well as its safe use. Improper use can lead to personal injury and damage to property.

- The operating and installation instructions contain important information about installation and operation. These enable you to protect yourself against injuries and prevent damage to the appliance. Contact details for further information as well as application and usage questions can be found on the back of these operating and installation instructions.
- The term 'appliance' is used for the Universal recirculation unit 1 (UUE1) and the Universal recirculation unit 3 (UUE3).
- ▶ Read the operating and installation instructions fully before using the appliance for the first time.
- ▶ Always store the operating and installation instructions within easy reach so that they can be accessed if required.
- ▶ Pass the operating and installation instructions to the next owner if you sell the appliance.
- ▶ Conduct all work extremely attentively and conscientiously.
- ▶ Check the appliance for visible damage when unpacking it.
- ▶ Do not connect a damaged appliance.
- ▶ Only use the appliance once all installation activities are complete. This is the only way to ensure safe operation.
- ▶ Keep pets away from the appliance.

Recirculation mode

INFO When cooking, additional moisture is released into the ambient air.

INFO In recirculation mode, only a slight amount of moisture is removed from the cooking vapour.

- ▶ When using recirculation mode, ensure a sufficient supply of fresh air, e.g. by opening a window.

- ▶ Ensure a normal and comfortable room climate (humidity of 45 – 60%), e.g. by opening natural ventilation openings or using domestic ventilation systems.
- ▶ After every use in recirculation mode, switch the cooktop extractor to a low level for about 15 minutes or activate the automatic after-run function.

Households with children and people with special needs

- ▶ The appliance can be used by children aged 8 and above as well as people with reduced physical, sensory or mental capacities or a lack of experience and/or knowledge if they are supervised or have been instructed how to safely use the appliance and understand the resultant risks.
- ▶ Supervise children in the vicinity of the appliance.
- ▶ Children must not play with the appliance.
- ▶ Do not store any items that could be of interest to children in storage spaces above or behind the appliance. Children will otherwise be encouraged to climb on the appliance.

Unauthorised modifications

Unauthorised modifications can cause the appliance to pose risks.

- ▶ Do not conduct any modifications to the appliance.

Cleaning and maintenance

The activated charcoal filters must be regularly replaced.

Dirty filters can lead to unpleasant odours (see the Cleaning and maintenance section).

2.2 Safety instructions – operation

The appliance must only be used in connection with a BORA cooktop extractor.

Please also see the BORA cooktop extractor operating instructions in this regard.

2.3 Intended use

The appliance is only intended for use in private households to reduce odours during food preparation. It is not intended for:

- Outdoor use
- Installation in vehicles
- Heating rooms
- Use in non-stationary installation sites (e.g. on ships)
- Use with an external timer or a separate remote control system (remote operation)

Any use other than that specified in these operating and installation instructions or any use that goes beyond that which is described here is classed as unintended. BORA does not assume any liability for damages caused by improper use or incorrect operation.

All misuse is prohibited!

INFO BORA Holding GmbH, BORA Vertriebs GmbH & Co KG, BORA APAC Pty Ltd and BORA Lüftungstechnik GmbH do not assume any liability for damage arising from non-adherence to the safety and warning information.

3 Device description

- Observe all safety and warning information during operation (see the Safety section).

The Universal recirculation unit 1 (UUE1) has the following features:

- Activated charcoal foam
- Fine filter fleece

3.1 Technical data

Parameter	Value
Weight (incl. accessories/packaging)	Approx. 2.0 kg
Activated charcoal foam	1.0 kg
Housing material	Plastic
Dimensions	(width x depth x height)
Recirculation unit with plinth	330 x 450 x 94 mm
Inlet opening	(exterior dimensions) 222 x 89 mm

Tab. 3.1 Technical data

3.2 Structure

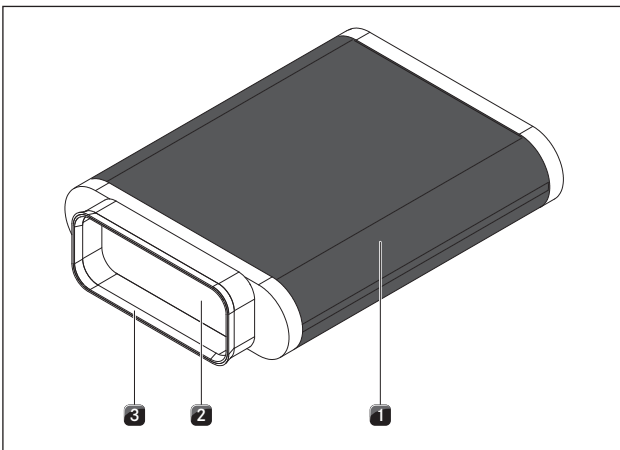


Fig. 3.1 Recirculation unit 1 (UUE1)

- [1] Activated charcoal foam
- [2] Fine filter fleece
- [3] Sealing lip

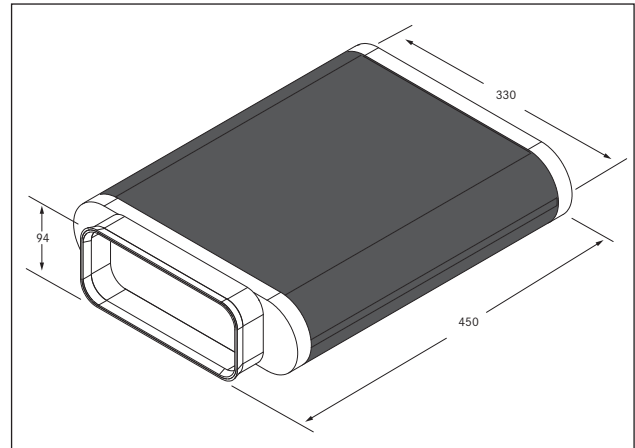


Fig. 3.2 Appliance dimensions (UUE1)

3.3 Functional principle

- The cooking vapours created are extracted at the cooktop by the BORA cooktop extractor and fed into the recirculation unit.
- Inside the filter, the cooking vapour is pre-filtered by the fine filter fleece.
- Odour absorption takes place in the activated charcoal foam.
- The purified air is then expelled.

4 Installation

- ▶ Observe all safety and warning information (see the Safety section).
- ▶ Follow the enclosed manufacturer's information.

INFO The product must not be installed above cooling devices, dishwashers, stoves, ovens, washing machines or driers.

4.1 Checking the scope of delivery

Name	Quantity
Recirculation unit 1 (UUE1)	1
Operating and installation instructions	1

Tab. 4.1 Scope of delivery

- ▶ Check the scope of delivery for damage and make sure it is complete.
- ▶ If there are any missing or damaged parts, please notify BORA After Sales Service.
- ▶ Do not under any circumstances install parts which are damaged.
- ▶ Dispose of transport packaging in the proper manner (see the Decommissioning and Disposal section).

4.2 Assembly instructions

- Keep the airflow channels as short as possible.
- Do not install the recirculation unit in floor units or bodies with no separation from the doors or drawers as the positive pressure could cause these to open of their own accord.
- The drawers, back panels and shelves in the floor unit must be removable for maintenance and cleaning purposes.
- If the recirculation unit is installed in an adjacent room, air recirculation must occur in the room in which the vapour extraction system is installed so as not to generate any low pressure.

4.3 Installing the recirculation unit

INFO A return flow aperture of > 500 cm² in the plinth area must be provided for recirculation.

INFO The air duct diameter must be no less than 150 mm (176 cm²).

INFO With an air duct length of 50 cm, no corner or bend should be installed before the fan module (motor).

INFO Install straight duct pieces with a length of at least 50 cm between the corners or bends.

4.3.1 Installing the recirculation unit

- Compressed tape is installed on the recirculation unit's internal connection to enable this to be securely attached.
- ▶ Connect the duct with the recirculation unit's ducting.
- ▶ Evenly push the recirculation unit onto the ducting.
- ▶ Remove the protective film from the Velcro fastener on the outer side of the recirculation unit.
- ▶ Use the Velcro fastener to prevent the recirculation unit from slipping.
- ▶ Stick the connections for the ducting sections to the housing with an air tight join
- UDB25 sealing tape can also be used for air-tight installation (not included in the scope of delivery). The UDB25 sealing tape (Universal accessory UDB25) can be obtained from your BORA distributor.

4.3.2 Replacing the Universal recirculation unit

Switch off the cooktop extractor as shown in the BORA cooktop extractor operating instructions.

- ▶ Open the revision option to access you appliance.
- ▶ Loosen the appliance with the angle brackets.
- ▶ Remove the appliance from the ducting.
- ▶ Clean the ducting with a soft cloth and detergent or water.
- ▶ Install the replacement appliance as described in the Installation section.
- ▶ Check that all the duct connections are tight and secure.
- ▶ Check that the appliance functions correctly.
- ▶ Do this by putting the cooktop extractor into operation as shown in the BORA cooktop extractor operating instructions.
- ▶ Seal any possible leakages.
- ▶ Re-check the tightness of the connections.
- ▶ Seal the revision option.
- ▶ Properly dispose of the used filter.

4.4 Handover to user

Once installation is complete:

- ▶ Explain the main functions to the user.
- ▶ Explain all safety-related aspects of operation and handling to the user.
- ▶ Provide the user with the accessories and the operating and installation instructions for safe storage.

5 Cleaning and maintenance

- ▶ Observe all safety and warning information (see the Safety section).
- ▶ Follow the enclosed manufacturer's information.
- ▶ When conducting scheduled cleaning and other work on the appliance, ensure that the cooktop extractor is fully switched off so as to prevent injury. For how to do this, please see the BORA cooktop extractor operating instructions.
- ▶ After every use, switch the cooktop extractor to a low level for about 15 minutes or activate the automatic after-run function.
- ▶ Adhere to the following replacement and service cycles:
 - In the event of odour formation
 - Declining extraction performance

Component	Replacement cycle	Service cycle
Recirculation unit 1 (UUE1)	1x per year	
Recirculation unit 3 (UUE3)	Every 2 years	
Activated charcoal filter		

Tab. 5.1 Replacement and service cycles

- ▶ Contact your BORA specialist supplier or the BORA After Sales Service to commission a service cycle to be performed.

5.1 Cleaning agents

- ▶ Never use steam cleaners, abrasive sponges, scouring pads or chemically aggressive cleaning agents (e.g. oven cleaner spray).
- ▶ Make sure that the cleaning agent does not contain any sand, soda, acids, lyes or chloride.

5.2 Cleaning

Users are not intended to clean the inside of the appliance and must not do this under any circumstances.

6 Troubleshooting

- Observe all safety and warning information (see the Safety section).

Operating situation	Cause	Remedy
Unpleasant odours.	The automatic after-run is not used.	Use the automatic after-run.
	Recirculation unit usage period exceeded.	Replace the recirculation unit (UUE1).

Tab. 6.1 Resolving a fault

- In all other instances, contact BORA After Sales Service (see the Warranty, technical service and spare parts section).

7 Warranty, service and spare parts

- ▶ Observe all safety and warning information (see Safety chapter).

7.1 Warranty

The warranty period shall be 2 years.

7.2 Service

BORA Service:

see reverse side of operating and assembly instructions



- ▶ In the case of faults you cannot fix yourself, contact your BORA specialist supplier or the BORA Service Team.

The After Sales Service will require the type designation and the serial number of your device (FD number). This information is provided on the nameplate or on the back of the manual as well as on the device.

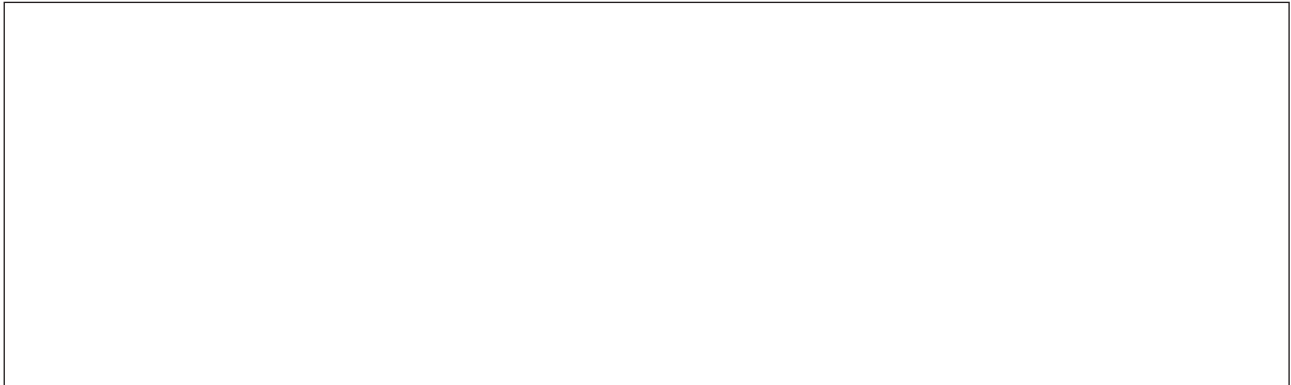
7.3 Spare parts

- ▶ Only use original spare parts when making repairs.

INFO Spare parts can be obtained from your BORA dealer, the BORA online service website at www.bora.com/service or by calling the service number provided.

9 Notes:

Nameplate:



Germany::

BORA Lüftungstechnik GmbH
Rosenheimer Str. 33
83064 Raubling
Germany
T +49 (0) 8035 / 907-240
F +49 (0) 8035 / 907-249
info@bora.com
www.bora.com

Australia – New Zealand:

BORA APAC Pty Ltd
A/ 91-95 Victoria Road
Drummoyne NSW 2047
Australia
T +61 2 7900 5580
F +61 2 8076 3514
info@boraapac.com.au
www.boraapac.com.au

Austria:

BORA Vertriebs GmbH & Co KG
Prof.-Dr.-Anton-Kathrein-Straße 3
6342 Niederndorf
Österreich
T +43 (0) 5373 / 62250-0
F +43 (0) 5373 / 62250-90
mail@bora.com
www.bora.com

Europe:

BORA Holding GmbH
Prof.-Dr.-Anton-Kathrein-Straße 3
6342 Niederndorf
Austria
T +43 (0) 5373 / 62250-0
F +43 (0) 5373 / 62250-90
mail@bora.com
www.bora.com

