

Kurzanleitung Funktionen und Bedienung

Quick guide functions and operation

Guía rápida funciones y uso

Guide rapide fonctions et utilisation

Guida rapida funzioni e uso

Snelgids functies en bediening

PKA3/PKA3AB, PKAS3/PKAS3AB

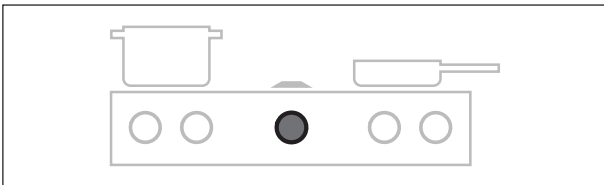
Abzugsautomatik

Automatic extractor function/

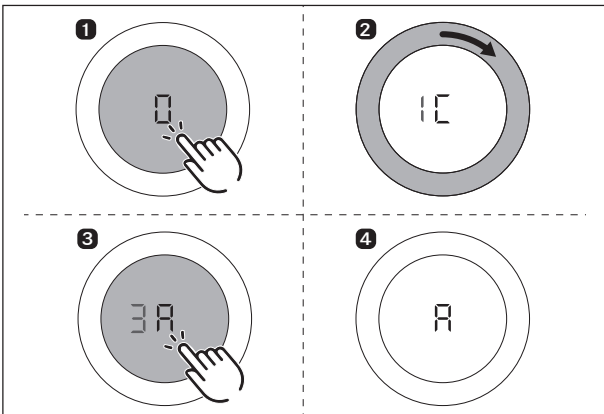
Mecanismo automático de extracción/

Aspiration automatique/Sistema di aspirazione automatica/

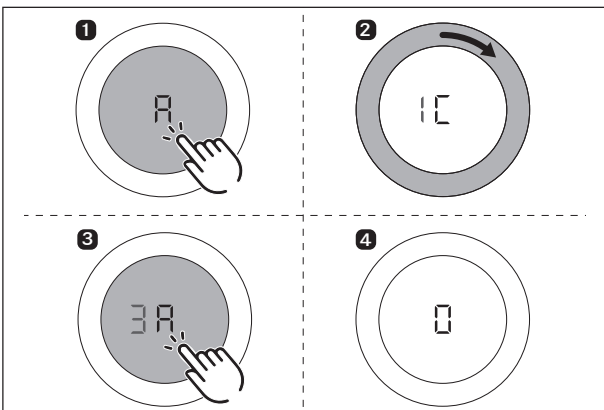
Automatische afzuiging



aktivieren/activate/activar/activer/attivare/activeren



deaktivieren/deactivate/desactivar/désactiver/disattivare/deactiveren



PKA3/PKA3AB, PKAS3/PKAS3AB

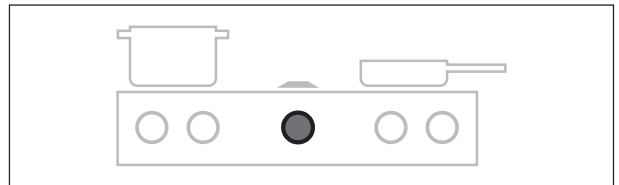
Kurzzeit-Timer (Eieruhr)

Short-time timer (egg timer)/

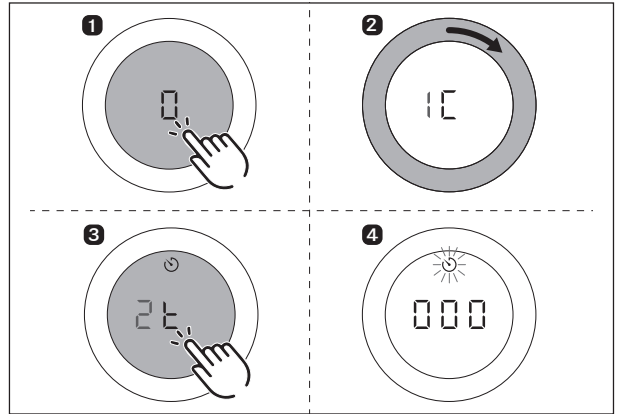
Alarma de tiempo corto (temporizador de cocina)/

Minuteur d'alarme/Contaminuti breve/

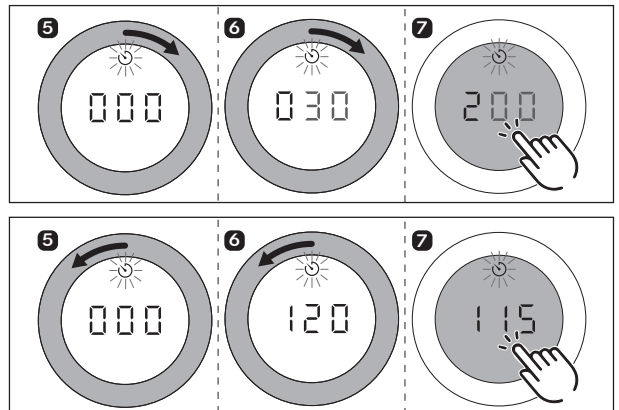
Timer voor korte tijdsspanne (eierwekker)



aktivieren/activate/activar/activer/attivare/activeren



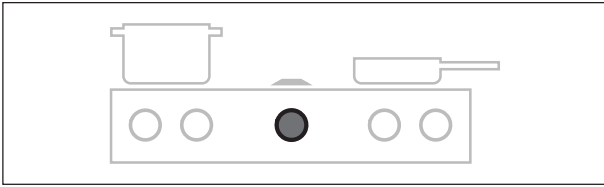
Zeit einstellen / set time / ajustar el tiempo / régler la minuterie / impostazione tempo / Tijd instellen



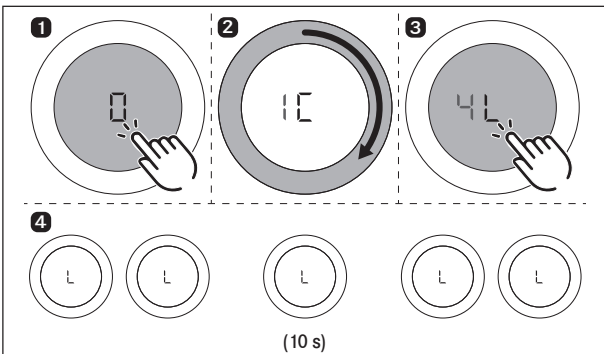
PKA3/PKA3AB, PKAS3/PKAS3AB, PKFI3/PKFI3AB, PKI3, PKIW3, PKC3, PKCB3, PKCH3, PKG3, PKT3

Kindersicherung

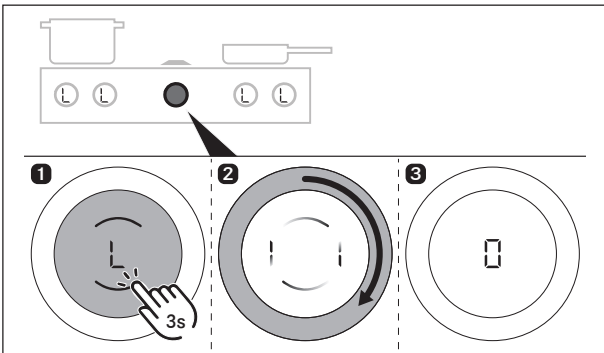
Childproofing feature/Dispositivo de seguridad para niños/ Sécurité enfant/Protezione bambini/Kinderbeveiliging



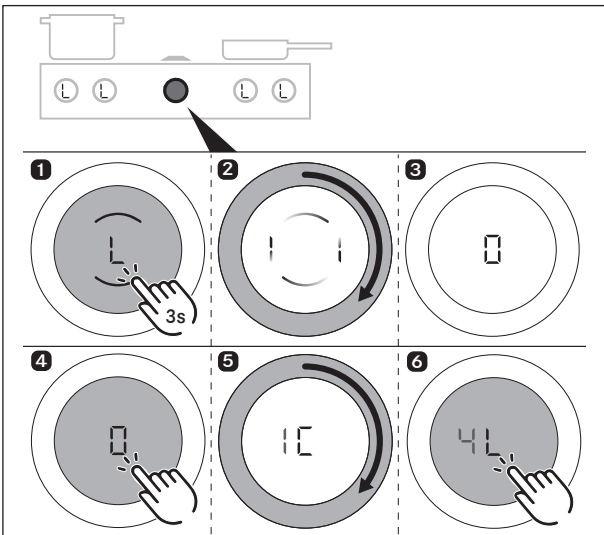
aktivieren/activate/activar/activer/attivare/activeren



für einen Kochvorgang deaktivieren / deactivating for a cooking session / desactivar para un proceso de cocción / désactivez pour un processus de cuisson / disattivazione per un processo di cottura / voor een kookproces deactiveren



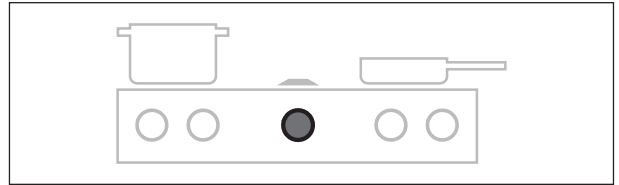
deaktivieren/deactivate/desactivar/désactiver/disattivare/deactiveren



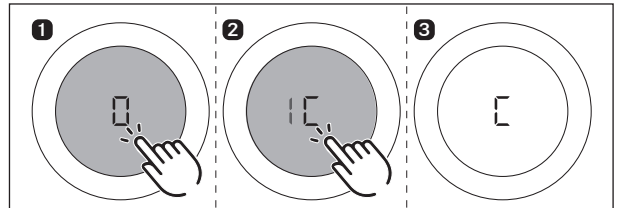
PKA3/PKA3AB, PKAS3/PKAS3AB

Reinigungsfunktion

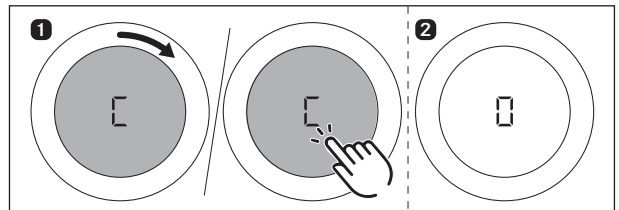
Cleaning function/Función de limpieza/ Fonction de nettoyage/Funzione di pulizia/Reinigungsfunctie



aktivieren/activate/activar/activer/attivare/activeren



deaktivieren/deactivate/desactivar/désactiver/disattivare/deactiveren

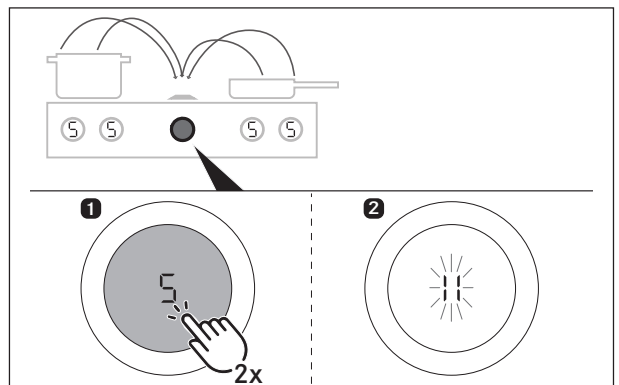


PKA3/PKA3AB, PKAS3/PKAS3AB, PKFI3/PKFI3AB, PKI3, PKIW3, PKC3, PKCB3, PKCH3, PKG3, PKT3

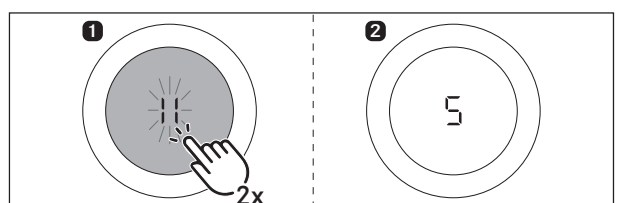
Pausefunktion

Pause function/Función de pausa/Fonction de pause/ Funzione pausa/Pauzefunctie

aktivieren/activate/activar/activer/attivare/activeren



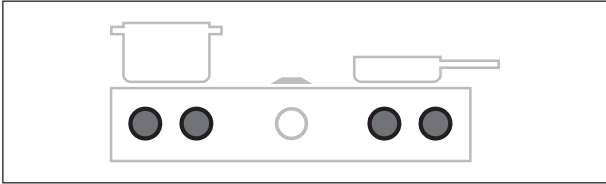
deaktivieren/deactivate/desactivar/désactiver/disattivare/deactiveren



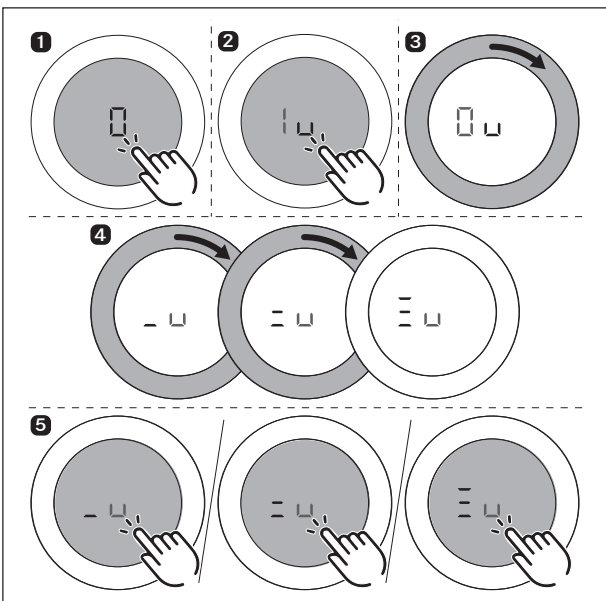
PKFI3/PKFI3AB, PKI3, PKIW3, PKC3, PKCB3, PKCH3, PKG3

Variable Warmhaltefunktion

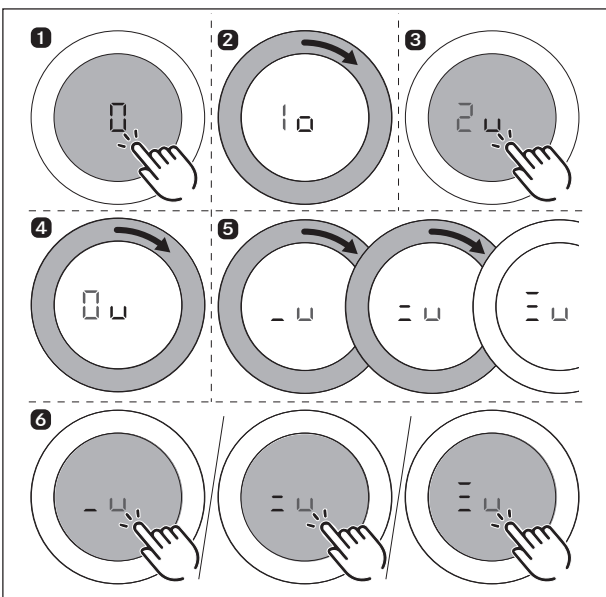
Variable heat retention function/
 Función de mantenimiento de la temperatura variable/
 Fonction de maintien au chaud variable/
 Funzione mantenimento calore variabile/
 Variabele warmhoudfunctie



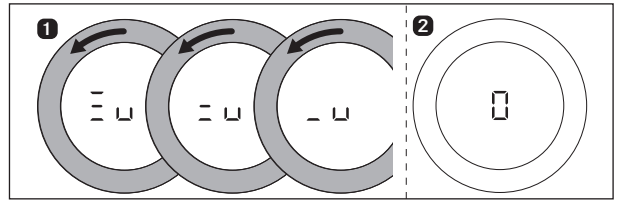
aktivieren/activate/activar/activer/attivare/activeren
 PKFI3/PKFI3AB, PKI3, PKIW3, PKG3



aktivieren/activate/activar/activer/attivare/activeren
 PKC3, PKCB3, PKCH3



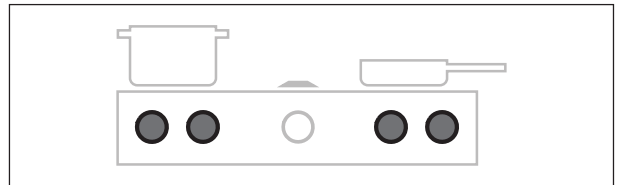
deaktivieren/deactivate/desactivar/désactiver/disattivare/deactiveren



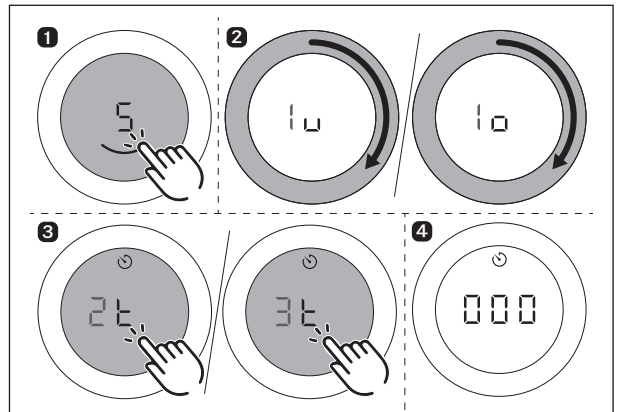
PKFI3/PKFI3AB, PKI3, PKIW3, PKC3, PKCB3, PKCH3, PKG3

Timer-Funktion (Abschaltautomatik)

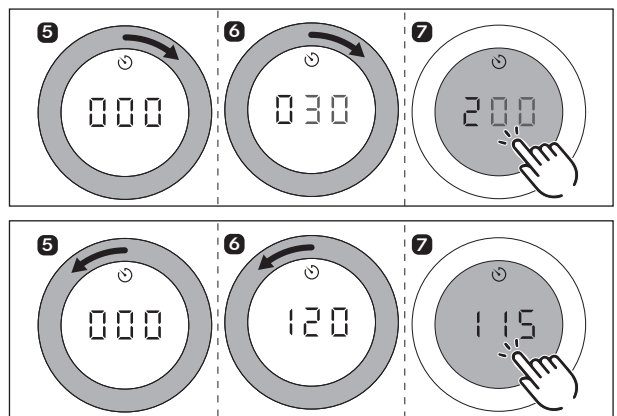
Timer function (automatic cut-off)/
 Función de temporizador (desconexión automática)/
 Fonction de minuteur de cuisson (arrêt automatique)/
 Funzione timer (sistema di spegnimento automatico)/
 Timerfunctie (automatische uitschakeling)



aktivieren/activate/activar/activer/attivare/activeren



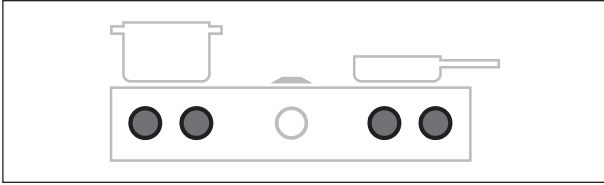
Zeit einstellen / set time / ajustar el tiempo / régler la minuterie / impostazione tempo / Tijd instellen



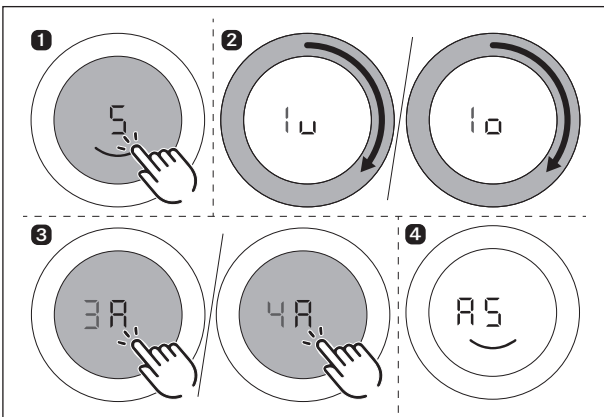
PKFI3/PKFI3AB, PKI3, PKIW3, PKC3, PKCB3, PKCH3, PKG3

Ankochautomatik

Automatic heat up function/
 Sistema automático de precalentamiento/
 Cuisson automatique/Avvio di cottura automatico/
 Automatische aankookfunctie



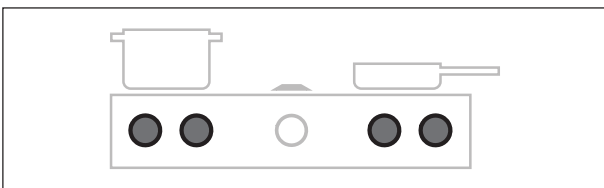
aktivieren/activate/activar/activer/attivare/activeren



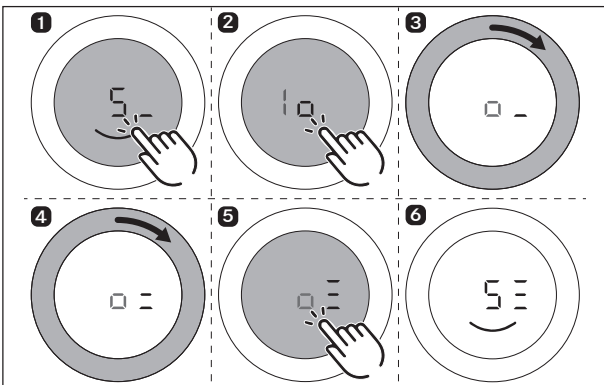
PKC3, PKCB3, PKCH3

Heizkreis-Zuschaltung – 2-Kreis, 3-Kreis, Bräter

Additional ring switching – 2-ring, 3-ring, roaster
 Conexión de círculos calentadores – 2 círculos, 3 círculos, asador
 Activation de feux – 2 feux, 3 feux, sauteuse
 Attivazione circuito di riscaldamento – 2 circuiti, 3 circuiti, bisticchiera
 Bijschakeling van verwarmingsringen – 2 ringen, 3 ringen, braadslee



aktivieren/activate/activar/activer/attivare/activeren

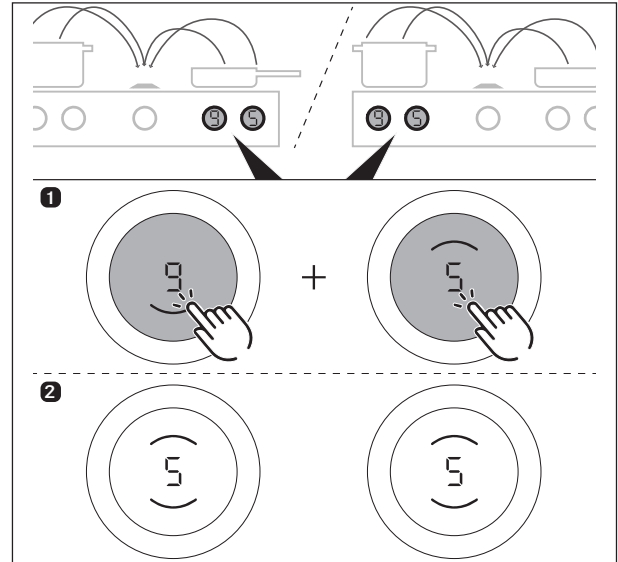


PKFI3/PKFI3AB, PKT3

Brückenfunktion

Bridging function/Función puente/Fonction de pont/
 Funzione bridge attiva/Brugfunctie

aktivieren/activate/activar/activer/attivare/activeren



deaktivieren/deactivate/desactivar/désactiver/disattivare/deactiveren

