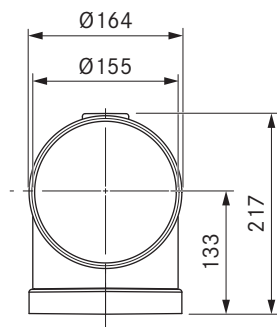
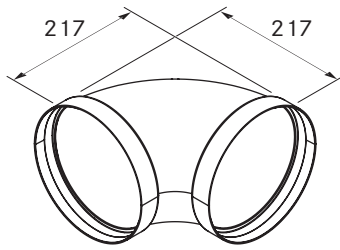


ERB90/1

Ecotube bend 90° round incl. sealing material



Technical data

Dimensions (width x depth x height)	Ø 164 x 217 x 217 mm
Weight	0.37 kg
Material property	C according to DIN EN 13501-1

Scope of delivery

- 2 x round seal ERD

Accessories

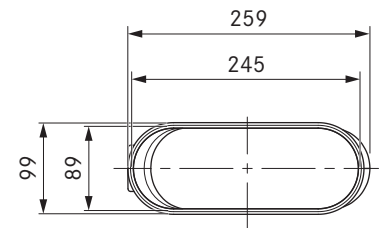
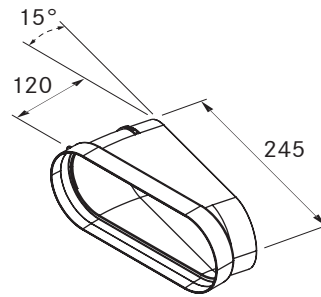
- ERMS mounting bracket set

Product- and planning instructions

- Moulded part with two round sleeve forms

EFBH15/1

Ecotube bend 15° flat horizontal incl. sealing material



Technical data

Dimensions (width x depth x height)	259 x 120 x 99 mm
Weight	0.21 kg
Material property	C according to DIN EN 13501-1

Scope of delivery

- 1 x flat seal EFD

Accessories

- EFMS mounting bracket set

Product- and planning instructions

- Moulded part with a shallow sleeve form