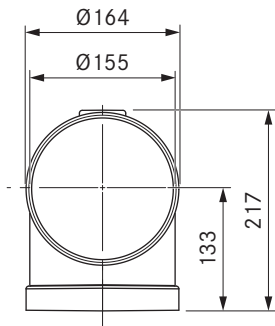
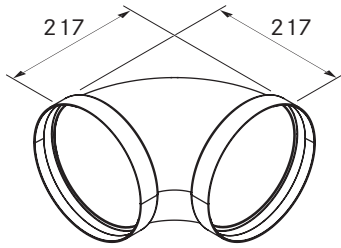


ERB90/1

BORA Ecotube bend 90° round incl. sealing material



technical data

Dimensions (WxDxH)	Ø 164 x 217 x 217 mm
Weight	0.37 kg
Material property	B1 according to DIN 4102-1

Product description

- Optimal extraction performance with the lowest possible noise level
- own duct system
- Full flexibility in the exhaust ducting
- 100% tight without additional taping
- Material class B1
- Including required Ecotube seals
- Complete BORA system

Scope of delivery

- 2 x round seal ERD

Accessories

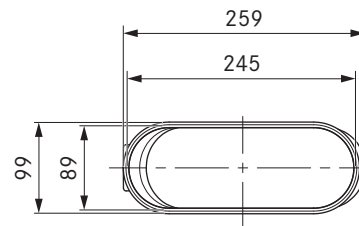
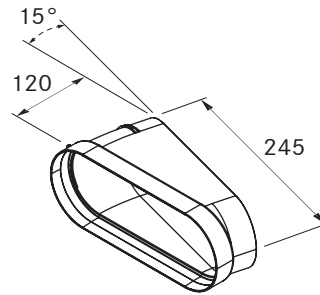
- ERMS mounting bracket set

product- and planning instructions

- Moulded part with two round sleeve forms

EFBH15/1

BORA Ecotube bend 15° flat horizontal incl. sealing material



technical data

Dimensions (WxDxH)	259 x 120 x 99 mm
Weight	0.21 kg
Material property	B1 according to DIN 4102-1

Product description

- Optimal extraction performance with the lowest possible noise level
- own duct system
- Allows easy directional adjustments
- Full flexibility in the exhaust ducting
- 100% tight without additional taping
- Material class B1
- Polished inner walls and oval cross section
- Including required Ecotube seals
- Complete BORA system

Scope of delivery

- 1 x flat seal EFD

Accessories

- EFMS mounting bracket set

product- and planning instructions

- Moulded part with a shallow sleeve form