



BORA

REFERENCES 2018/19

01 Project
LAEV

02 Project
Harberton Park 9

03 Project
Alpina Vista

A photograph of a modern building with a glass facade and a white, curved, ribbed structure. The building is shown from a low angle, looking up. The glass reflects the sky and the surrounding environment. The white structure is made of many small, rectangular pieces that form a continuous, flowing shape. The overall aesthetic is clean and architectural.

01

APARTMENT COMPLEX IN TALLINN,
CAPITAL OF ESTONIA

Project LAEV

PROJECT: LAEV
ARCHITECT: KOKO ARCHITECTS
CATEGORY: APARTMENTS AND OFFICES
APARTMENTS: 274
INTERIOR DESIGN: AET PIEL DESIGN (APT. 3, 7, 11, 13 AND 27)

LAEV, designed by the renowned architecture firm KOKO, completed in 2017, is located near the Tallinn city centre. Shaped like a ship, with a parabolic floor plan, the energy-efficient building, with movable lamellas, created an aesthetic link to the Baltic Sea to the north.

Tallinn Apartment complex in the capital of Estonia

The primary intention of the Aet Piel team in designing the interior of the apartment complex was to distance itself from standard solutions as much as possible, taking into consideration the building's open concept, high degree of natural light, and breath-taking views. The result is a creative combination of interior design and technology that integrates with its surroundings.

01 Project LAEV

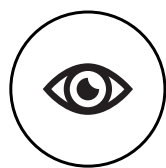


“Attention is drawn to the emphasis on light and space – without blocking the view in any way. BORA products are ideal because of their clean, minimalist design.”

Aet Piel, Interior Designer

BORA – innovative partner for flexible interior design

BORA Professional and BORA Basic systems have been installed in the kitchens of some of the apartments. With their clean aesthetic and their adaptability to any interior design concept, these systems contribute significantly to maintaining a consistency when it comes to the building's minimalist design approach.



Clear view

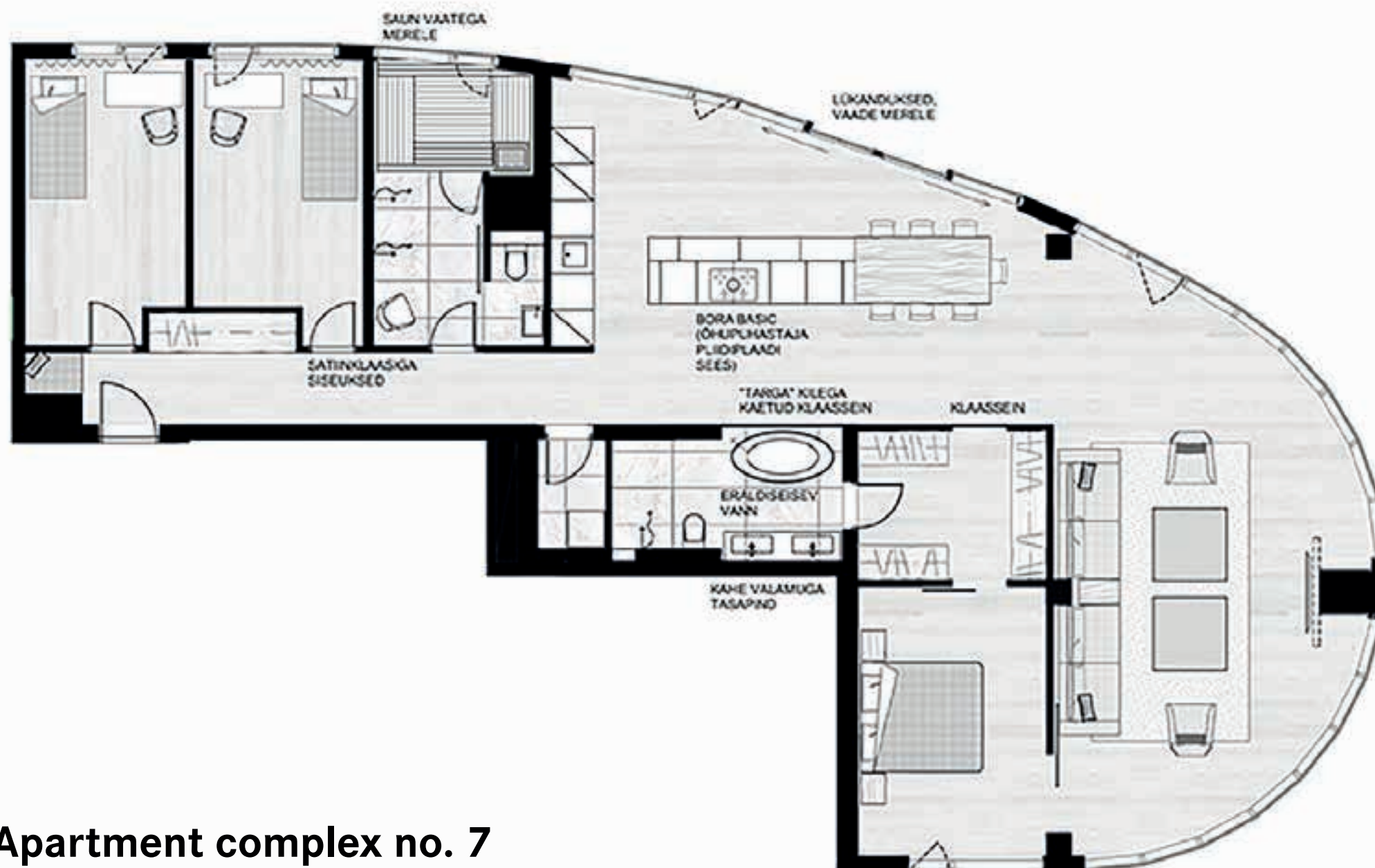
No annoying head-height
extractor hoods





The apartments' ceilings are much higher than standard ceilings: in the atrium, the ceilings are up to six metres high. In addition, the floor plan of the rooms is wider than usual, making them more spacious. Sun tunnels illuminated by skylights give north-facing rooms a bright and positive feel. Sound insulation is optimized so that LAEV residents can enjoy maximum privacy. Panoramic windows are made of special glass which is 6.2 cm thick.





Apartment complex no. 7

Exclusive floor plan

Technical data

LAEV construction period	2015–2017
Interior Designer Aet Piel	Apt. No. 3, 7, 11, 13 and 27
BORA Products	Basic

Description

- A total of 29 apartments; offices or businesses in the remaining areas
- Maximum flexibility open concept design thanks to BORA systems

“The planning of living areas has reached a new standard through the use of innovative systems such as BORA. From an architectural standpoint, this is made possible with higher ceilings, starting in the kitchen area and continuing into the living area. As interior designers, this provides us with the opportunity to consistently apply minimalist design concepts, as in the LAEV project. Even the kitchen areas can be closer to the living areas, as BORA products are quiet and have a very low visual impact, which is of key importance, particularly in smaller spaces. Together with BORA, we have entered a new era of home design.”

Aet Piel Design Team



02

PRIME ESTATE IN BELFAST,
CAPITAL OF NORTHERN IRELAND

Project Harberton Park 9

PROJECT:	HARBERTON PARK 9
ARCHITECT:	HILMARK HOMES AND BLUE HORIZON DEVELOPMENTS
CATEGORY:	TOWNHOUSES AND APARTMENT COMPLEXES
UNITS:	140

Harberton Park is an up-scale residential area in South Belfast and one of the most sought-after places to live in Northern Ireland. The homes in this large-scale project were built by HBH Developments, a joint venture between Hilmark Homes and Blue Horizon Developments. Of the planned 140 properties, 50 have already been completed.

Belfast Townhouses and apartment complexes in the capital city of Northern Ireland

The townhouses and apartment complexes combine traditional architecture with ultra-modern design elements, meet high specifications and use state-of-the-art energy efficiency and insulation technology. The properties are offered ready for occupancy. However, home buyers also have the option to fully customise their home's interior design components.

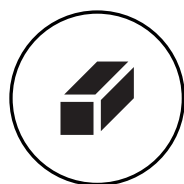


“In addition to quality, design and numerous efficiency attributes, owners are also drawn to the properties’ highly prestigious location.”

Simon Brien, Estate Agent

BORA – innovative partner for flexible interior design

The architects have decided to install the BORA system in the completed townhouses. Furnishing the homes with the BORA cooktop extractor provides a great deal of flexibility in designing a personalised and open-concept kitchen area, and meets the highest aesthetic requirements.



Design freedom

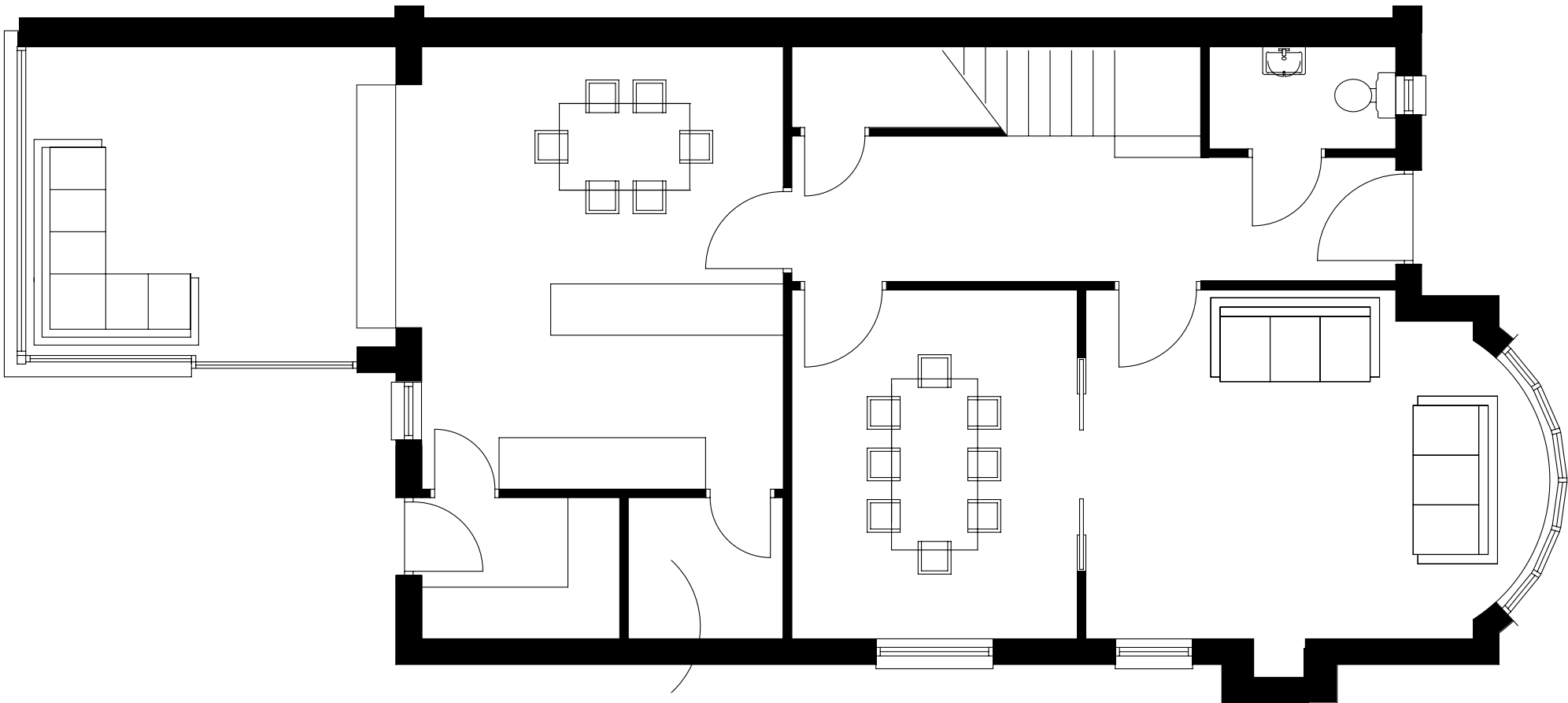
Setting the standard for
modern kitchen design





Space, light and elegance prevail in the living areas of this residential project. The abundance of light is quintessential to the historical character and contributes towards the elegance of the high-value materials. The balance of inspiration and intimacy perfectly describes the basic nature of the design. The cooking and eating areas are defined by their intuitive design and high levels of natural light. Sunrooms with floor-to-ceiling windows and sliding doors seamlessly connect the interior with the outdoors.





Harberton Belfast 9

Exclusive floor plan

Technical data

Harberton Park 9 construction period	Phase 2, 2016–2018
Provider	HBH Developments
BORA Products	Basic

Description

- A total of 140 residences on a 16 hectare property
- High kitchen design standards are met through the use of BORA systems

The homes' exteriors are designed to match the traditional architectural style of the surrounding area. The focal point of the interior design is on modern, high-class elegance, combined with features that include high ceilings, baseboards, panelled doors and Italian floor and wall tiles in the bathroom areas. Designed as highly functional family homes, the houses are intended for everyday use. For example, the entire ground floor is equipped with in-floor heating. Harberton Park is an innovative project that combines tradition and elegance with contemporary comfort.





Project Alpina Vista

03

MULTI-FAMILY DWELLING IN LACHEN,
SWITZERLAND, ON LAKE ZURICH

PROJECT: ALPINA VISTA
ARCHITECT: MB ARCHITEKTEN, LACHEN
CATEGORY: MULTI-FAMILY DWELLING
UNITS: 13 CONDOMINIUMS, 51 RENTAL UNITS

The community of Lachen, with a population of 8600, located on Lake Zurich in the canton of Schwyz, is one of the most sought-after living areas of Switzerland. It is particularly attractive thanks to its proximity to the banking and financial centre of Zurich. The Alpina Vista Project was implemented by Mächler Grund+ Bau in Lachen.

Switzerland Condominiums in the lake- side community of Lachen

Apartments of different sizes combine functionality, aesthetics and design. A well-defined design concept, generous floor plans, large front windows and glassed-in balconies create a highly attractive overall image and guarantee premium, modern living. The upgrade budget includes customisable kitchens, bathrooms and flooring.



“An area unlike any other, where tradition, leisure and business rub shoulders. If you live here, you won’t miss out on a thing. Everything you need is just outside your door: Lake Zurich, mountains, business centres and culture.”

Sandra Jucker, Real Estate Agent

BORA – innovative partner for flexible interior design

In deciding on high-quality equipment for the condominiums' open-concept kitchens, the property developers and architects selected the BORA basic system. The sales brochures for the exclusive project actually list the BORA induction cooktop with its integrated extractor system as a key selling point.



Effectiveness

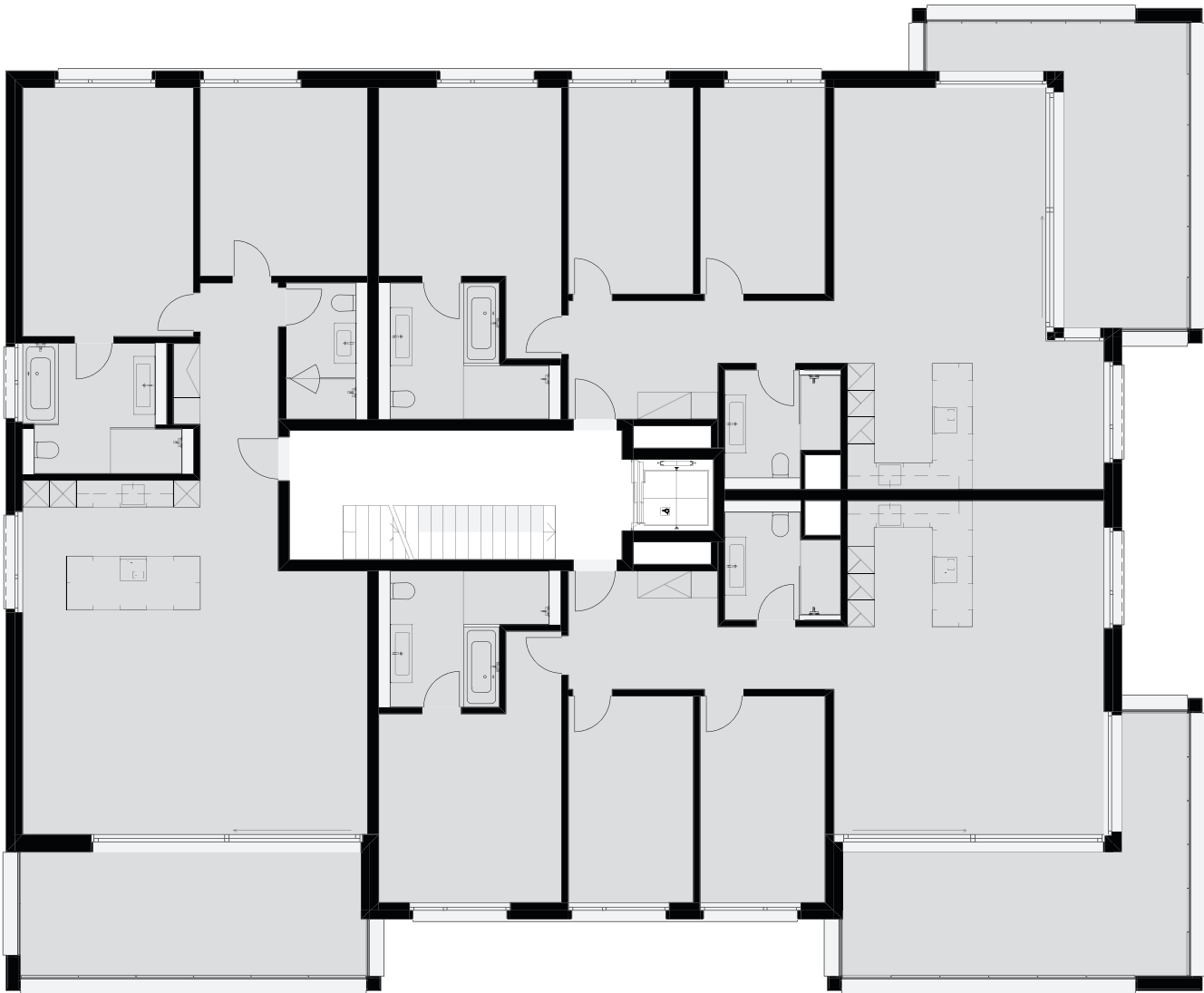
A focus on the bare essentials





The ground floor and three other floors feature 3½ and 4½ room apartments, while the top floor boasts a 5½ room penthouse with a gross living area of 279 square metres, featuring a 195 square metre terrace. The innovative household conveniences are state-of-the art. All apartments feature an integrated “smart PLACE” system which controls shutters, lights, heating, ventilation and a video-intercom system. The system can be upgraded with additional features.





Condominiums in a multi-family apartment dwelling in Lachen

Exclusive floor plan

Technical data

Construction period	2016–2018
Architecture and construction management	MB Architekten, Lachen
BORA Products	Basic, Classic

Description

- 13 condominiums in a multi-family apartment dwelling
- Design flexibility and high aesthetic standards with BORA systems

The condominiums are open-concept; the modern floor plan with spacious dimensions makes for easily furnished living areas. The clean design and the use of high-quality materials create a sense of trendy well-being, the high proportion of glazing ensures a maximum amount of natural light. The project also represents the highest standards of environmentally conscious and energy-efficient living. Compliance with the “Minergie” standard means that these low-energy structures meet high Swiss certification standards. A property that highlights innovative and aesthetic features.

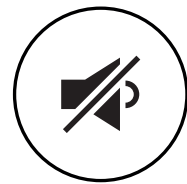


The key BORA advantages



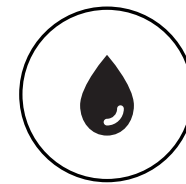
Fresh air

Cooking while
surrounded by fresh air



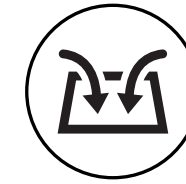
Quiet operation

Significantly quieter than
conventional extractor hoods



Simple cleaning

Why make things difficult
when there is an easy
option?



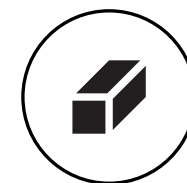
Effectiveness

A focus on the bare
essentials



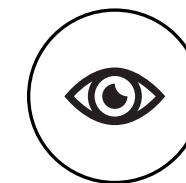
Best materials

High functionality and
long service life



Design freedom

Setting the standard for
modern kitchen design



Clear view

No annoying head-height
extractor hoods

Other projects

04 Project
WOHO / Tallinn, Estonia



05 Project
Mirador / Schindellegi, Switzerland



06 Project
Villa Blanch / Barcelona, Spain



07 Project
Palacio Can Puig / Mallorca, Spain

