

EN Supplement: changing the gas connection

- i** Please note: changed gas connection. Observe the following instructions in addition to the installation instructions.
- i** Observe all safety and warning information in the installation instructions.
- i** Valid for CKG-003.

CKG

Parameter	Value
Gas connection	1/2" internal thread

Tab. 1.1 Gas connection

Device dimensions CKG

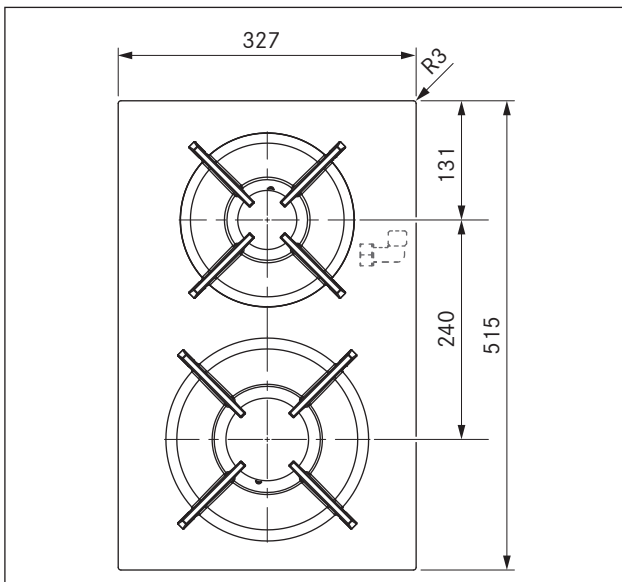


Fig. 1.1 CKG device dimensions top view

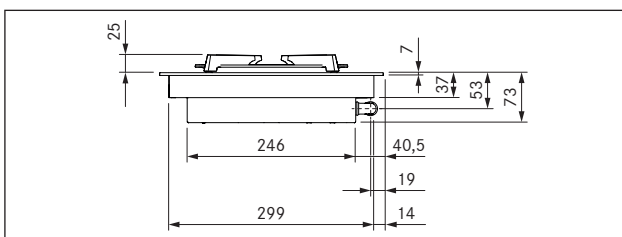


Fig. 1.2 CKG device dimensions front view

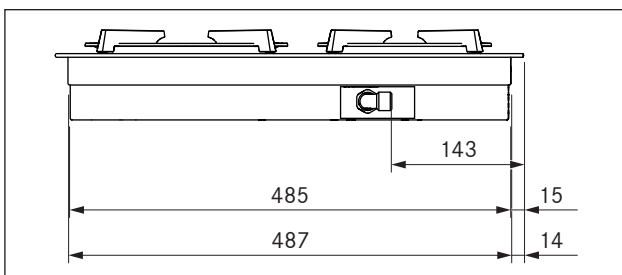


Fig. 1.3 CKG device dimensions side view

Special assembly instructions for gas cooktop CKG

- ▶ Please note the local regulations and connection requirements applicable to gas cooktops.
- ▶ Before connecting the appliance, check that the appliance settings comply with local connection requirements (gas type and pressure).
- i** If a CKG gas cooktop is installed to the right of the extractor, the use of a 900 mm carcass is recommended.
- i** Minimum requirement for operating gas cooktop CKG: System software 03.00 (or higher)
- ▶ If necessary, query the installed software version (see operating instructions).
- ▶ Update the system software if necessary (see operating instructions)
- i** Minimum clearance of 650 mm between the worktop and cabinet above in the case of gas appliances.
- i** On recirculation systems, a return flow aperture of at least 1000 cm² must be provided for each air cleaning unit.
- i** Ensure there is sufficient ventilation.
- i** Taking into account the applicable valid regulations, the cooktop must be connected to the gas line with an upstream stopcock.
- i** The hose connection must be laid in such a way that it is not subject to deformation, buckling or abrasion.
- i** The stopcock and gas supply pipe connections must be accessible.
- i** The pressure regulator must correspond to the set gas type and set gas pressure and must meet local and legal requirements.
- i** The gas connection hose line must not come into contact with smoke or the flue outlet of an oven.
- i** The hose line must not come into contact with hot surfaces on the cooktop or other devices.

Positioning of gas cooktop CKG with two cooktop extractors

If the gas cooktop is used in a model with two cooktop extractors, it is to be installed at the side. If installed between the cooktop extractors, the pull of air on both sides may affect the flames.

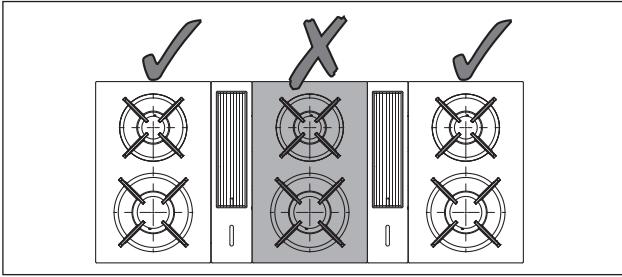


Fig. 1.4 Positioning of the CKG with two cooktop extractors

Adjusting the carcass for the gas connection (only 800 mm carcass)

If a gas cooktop is installed to the right of cooktop extractor CKA2, it can lead to space issues in an 800 mm wide carcass. Therefore, the right wall of the carcass must be removed.

- i** Before the CKG can be installed, the appliance must be connected to the gas supply.
- i** For worktops with a thickness of more than 40 mm, it may be necessary to make cut-outs in the area of the gas connection.
- i** The elbow fitting and the union nut of the gas connection must not have any contact with the carcass, etc. and must not be subjected to mechanical loading.

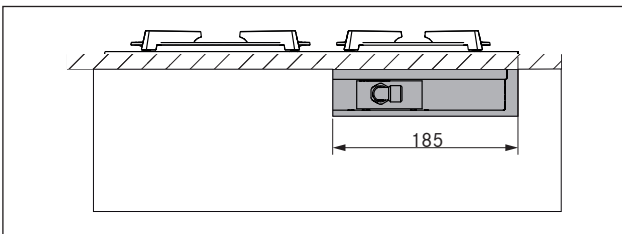


Fig. 1.5 Side cut-out for the gas connection

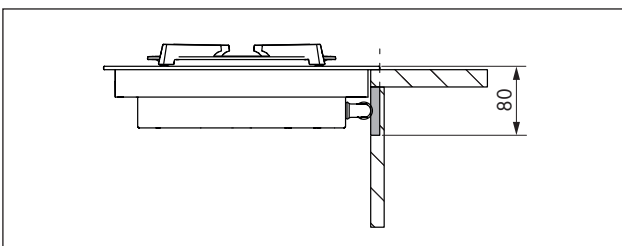


Fig. 1.6 Side cut-out for the gas connection (front view)

Gas installation

- i** Assembly, installation and commissioning may only be carried out in compliance with the nationally applicable laws, regulations and standards.
- i** The work must be carried out by qualified skilled workers who know and comply with the additional regulations of the local energy supply companies.

- i** The gas must be connected before the cooktop is installed in the worktop.

Gas connection

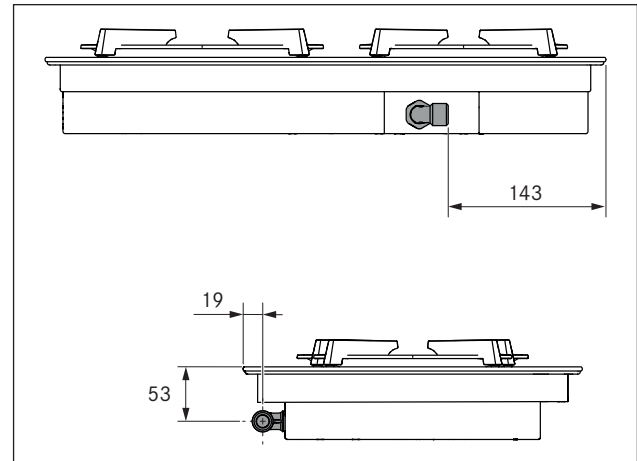


Fig. 1.7 Position of gas connection

The appliance is connected to the gas supply using a pre-installed elbow fitting with a 1/2" cylindrical internal thread. If, due to national regulations, a conical connection is required, the cylindrical/conical transition piece (provided) is to be used.

Connecting the gas supply

- ▶ Turn off the gas supply.
- ▶ Switch off the main switch/automatic circuit breaker before connecting the cooktop.
- ▶ Secure the main switch/automatic circuit breaker against being switched back on without permission.
- ▶ Make sure the power to the appliance is disconnected.
- ▶ Check the gas type and gas pressure of the gas supply pipe.
- ▶ Ensure that the appliance is equipped with the correct nozzle type in order to guarantee a correct burner flame and safe operation.
- ▶ Remove the protective cap from the elbow fitting.
- ▶ Connect the appliance to the gas supply.
- ▶ When the cooktop has been installed, use suitable testing equipment to check all the connections between the cooktop and the gas supply. There must not be any leaks.
- ▶ Create a leak test record and give this to the user.

- i** The gas cooktop is preset at the factory to natural gas G20/20 mbar (pre-assembled). If a different type of gas is used, this must be adjusted in the configuration menu on the cooktop.