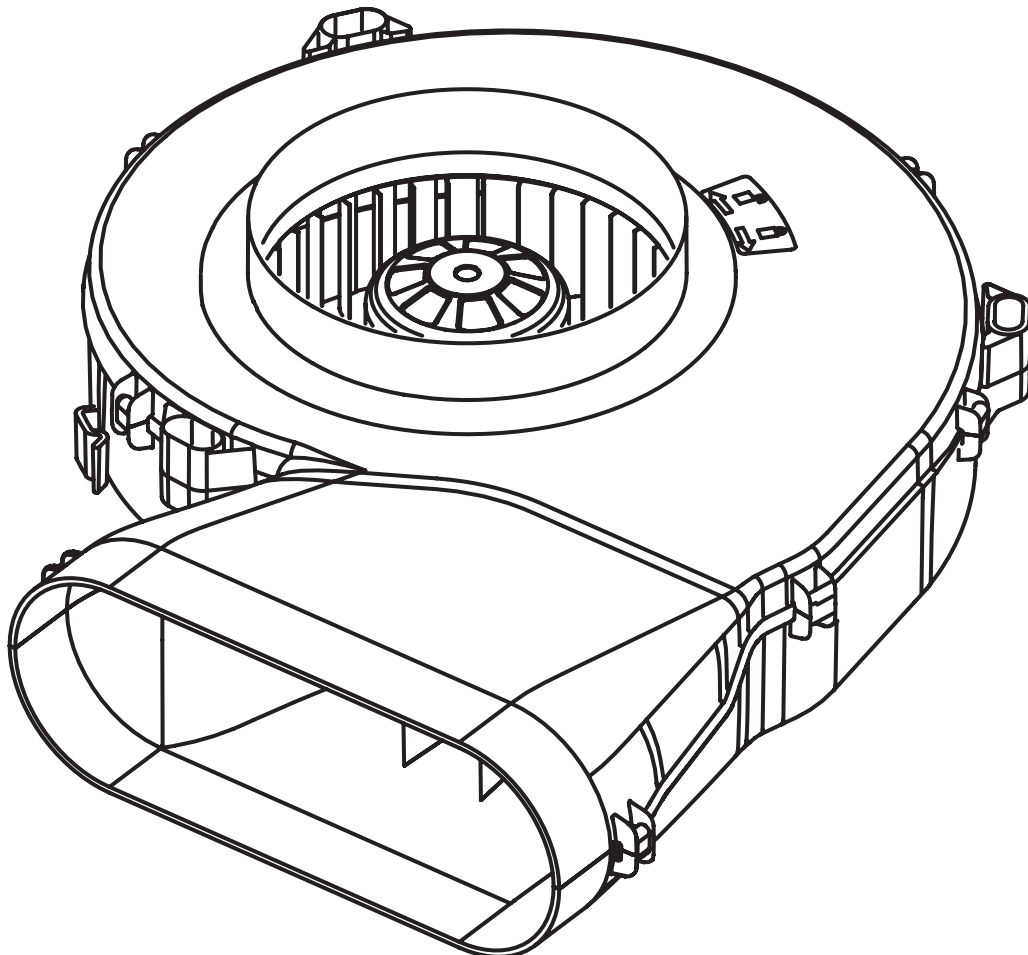


EN Assembly instructions ULS

Universal plinth fan



ULSUMEN-004



1 General information, safety information

1.1 Other applicable documents

There are other documents that apply and must be observed along with these operating and installation instructions. Observe all the documents relating to the BORA cooktop extractor, which are a component of the particular scope of delivery.

Directives

The device complies with the following EU directives:

2014/35/EU Low Voltage Directive
2014/30/EU EMC Directive
2009/125/EC Ecodesign Directive
2011/65/EU RoHS Directive

1.2 Use as intended

The device is intended for the removal of cooking vapours in combination with a BORA cooktop extractor in private households only. This device is not intended for:

- fitting in vehicles
- installation outdoors
- airing a room

BORA is not liable for damage caused by improper use or wrong operation.

All misuse is prohibited!

1.3 Safety instructions for installation and disassembly

Installation: the appliance may be installed and disassembled by qualified specialists only, who know and observe the customary regulations and additional regulations of the local utility company.

⚠ WARNING!

Danger of injury from a moving fan wheel!

If the fan wheel turns, there is risk of injury.

- ▶ Install the appliance in a tension-free condition exclusively.
- ▶ Before commissioning, connect the fan to both sides of the duct system.
- ▶ Ensure that the inlet nozzle is locked before the device is commissioned for the first time.
- ▶ In the case of straight ducting and a distance < 900 mm between the fan and wall sleeve, a safety guard must be provided for (available as an accessory).

i For more detailed information on decommissioning, disassembly and disposal, please see the instructions provided with the cooktop extractor.

i BORA Holding GmbH, BORA Vertriebs GmbH & Co KG, BORA APAC Pty Ltd and BORA Lüftungstechnik GmbH are not liable for damage arising from non-compliance with the safety and warning information.

Installation instructions: Original Translation

The distribution and duplication of this document, as well as the use and disclosure of its contents are prohibited unless expressly authorised.



These operating and installation instructions have been drawn up with the greatest of care. But it cannot be ruled out that subsequent technical modifications have not yet been incorporated or the relevant content has not yet been adapted. Please accept our apologies in this eventuality. An updated version can be requested from the BORA Service Team. Subject to printing errors and mistakes.

© BORA Vertriebs GmbH & Co KG

All rights reserved.

(D)

BORA Lüftungstechnik GmbH
Rosenheimer Str. 33
83064 Raubling
Germany
T +49 (0) 8035 / 9840-0
F +49 (0) 8035 / 9840-300
info@bora.com
www.bora.com

(A)

BORA Vertriebs GmbH & Co KG
Innstraße 1
6342 Niederndorf
Austria
T +43 (0) 5373 / 62250-0
F +43 (0) 5373 / 62250-90
mail@bora.com
www.bora.com

(INT)

BORA Holding GmbH
Innstraße 1
6342 Niederndorf
Austria
T +43 (0) 5373 / 62250-0
F +43 (0) 5373 / 62250-90
mail@bora.com
www.bora.com

(AU) (NZ)

BORA APAC Pty Ltd
100 Victoria Road
Drummoyne NSW 2047
Australien
T +61 2 9719 2350
F +61 2 8076 3514
info@boraapac.com.au
www.bora-australia.com.au

2 Technical data and device description

2.1 Technical data

Parameter	Value
Supply voltage	200 – 240 V
Frequency	50/60 Hz
Power consumption	170 W
Maximum current consumption	1.4 A
Maximum ambient temperature	40°C
Weight (incl. accessories/packaging)	2.85 kg
Maximum flow volume	750 m ³ /h
Maximum pressure	587 Pa
Connection cable length	0.6 m
Housing material	Plastic
Dimensions (width x depth x height)	370 x 388 x 100 mm
Duct connection	BORA Ecotube

Tab. 2.1 Technical data

2.1.1 Device dimensions

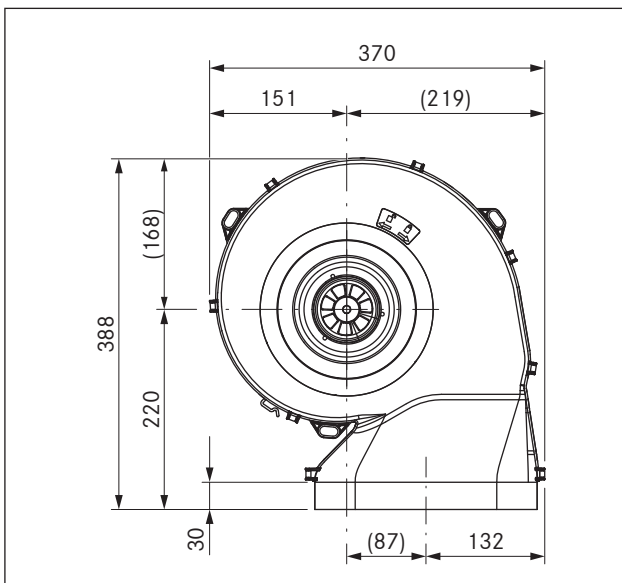


Fig. 2.1 ULS Device dimensions aerial view

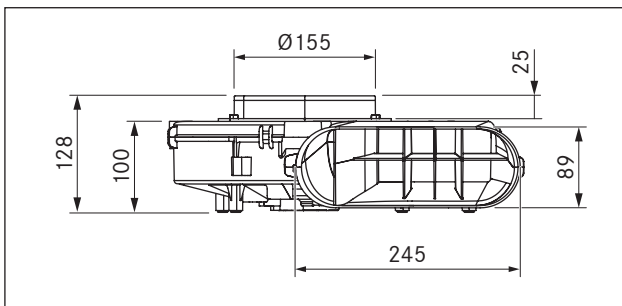


Fig. 2.2 ULS Device dimensions front view

2.2 Device description

- Energy-saving fan with EC technology
- For suspended installation, a bore hole diameter of 180 mm is required for the ceiling cut-out
- For horizontal installation in the plinth area, floor structure or suspended from the basement ceiling
- Integrated mounting points for ceiling assembly
- Removable inlet nozzle for plinth height from 100 mm

2.2.1 Structure

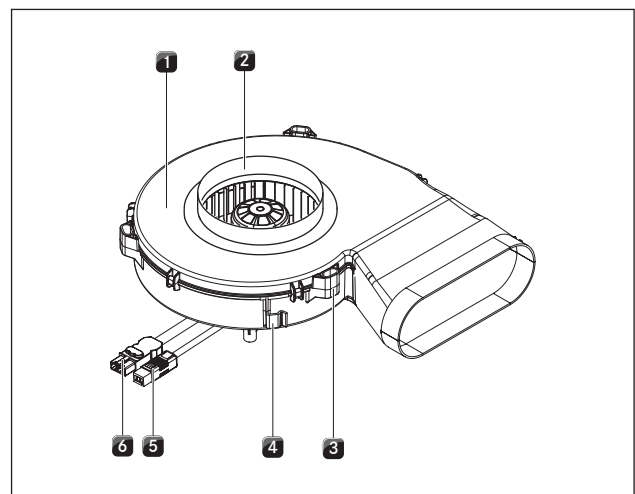


Fig. 2.3 Plinth fan

- [1] Plinth fan
- [2] Input nozzles
- [3] Mounting straps
- [4] Cable routing clip
- [5] Control line with connection plug
- [6] Mains cable with connection plug

3 Installation notes

- ▶ Observe the safety and warning information in these installation instructions, as well those of the BORA cooktop extractor (see section Safety).

3.1 Checking the scope of delivery

Name	Quantity
ULS plinth fan	1
Installation notes	1

Tab. 3.1 Scope of delivery

- ▶ Check the scope of delivery for damage and make sure it is complete.
- ▶ If there are any missing or damaged parts, please notify BORA After Sales Service.
- ▶ Do not under any circumstances install parts which are damaged.
- ▶ Dispose of transport packaging in the proper manner

3.2 Installing the plinth fan

- i** The floor unit must not be supported on the plinth fan housing.

3.2.1 Freestanding installation

- ▶ Clean any major dirt from the supporting surface.
- ▶ Position the plinth fan in the intended installation position.
- ▶ Ensure that the plinth fan is securely positioned on all 4 feet.
- ▶ Make sure that the connection cables are accessible.

3.2.2 Removing the inlet nozzle for installation purposes

You can remove the plinth fan's inlet nozzle from the fan housing for installation purposes.

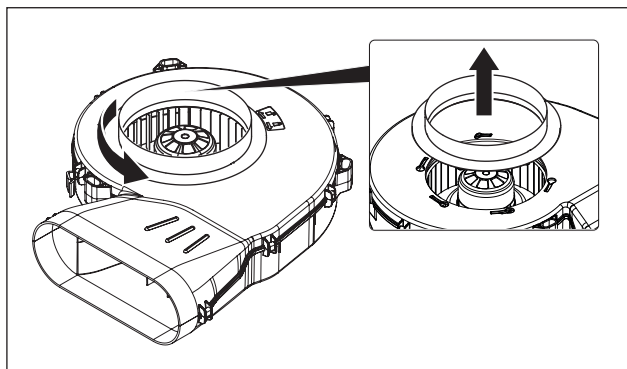


Fig. 3.4 Removing the inlet nozzle

- ▶ Unlock the inlet nozzle by turning it to the left.
- ▶ Lift the inlet nozzle up off the fan housing.
- ▶ Position the plinth fan in the installation position.

- ▶ Place the inlet nozzle on the fan housing.
- ▶ Lock the inlet nozzle by turning it to the right.
- The end positions when unlocking and locking the inlet nozzle are specified by an end stop.

3.2.3 Suspended installation

- i** If the plinth fan is installed suspended, the fixing material must be made available at the installation site in accordance with the building material.

- ▶ Hand-tighten the fixing nut and secure it against coming loose.
- ▶ Secure the plinth fan to the three mounting straps prepared on the housing.
- ▶ The connection cables must be secured with the cable routing clip provided.

3.3 Connecting the plinth fan to the universal control unit

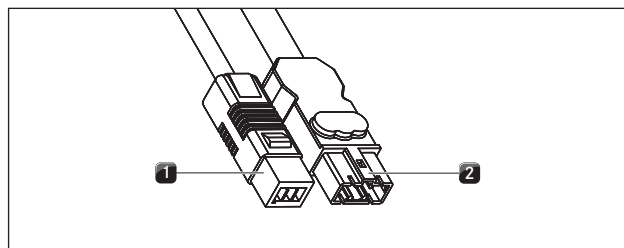


Fig. 3.5 Connection plug of the plinth fan

- [1] Plinth fan connection plug control line
- [2] Plinth fan connection plug power supply cable

- ▶ Connect the fan's control line [1] to the universal control unit.
- ▶ Connect the fan's power supply cable [2] to the universal control unit.
- ▶ Check the plug connections to ensure that they are secure.
- ▶ Make sure that the cable is not damaged.
- ▶ Verify that the installation was done correctly.